



WORLD'S

ONE

STOP FOUNDATION SHOP



WE PART OF
MAKING BEAUTIFUL

WORLD





We Part of Making Beautiful World



KAMAR

INFRASTRUCTURE PVT. LTD.

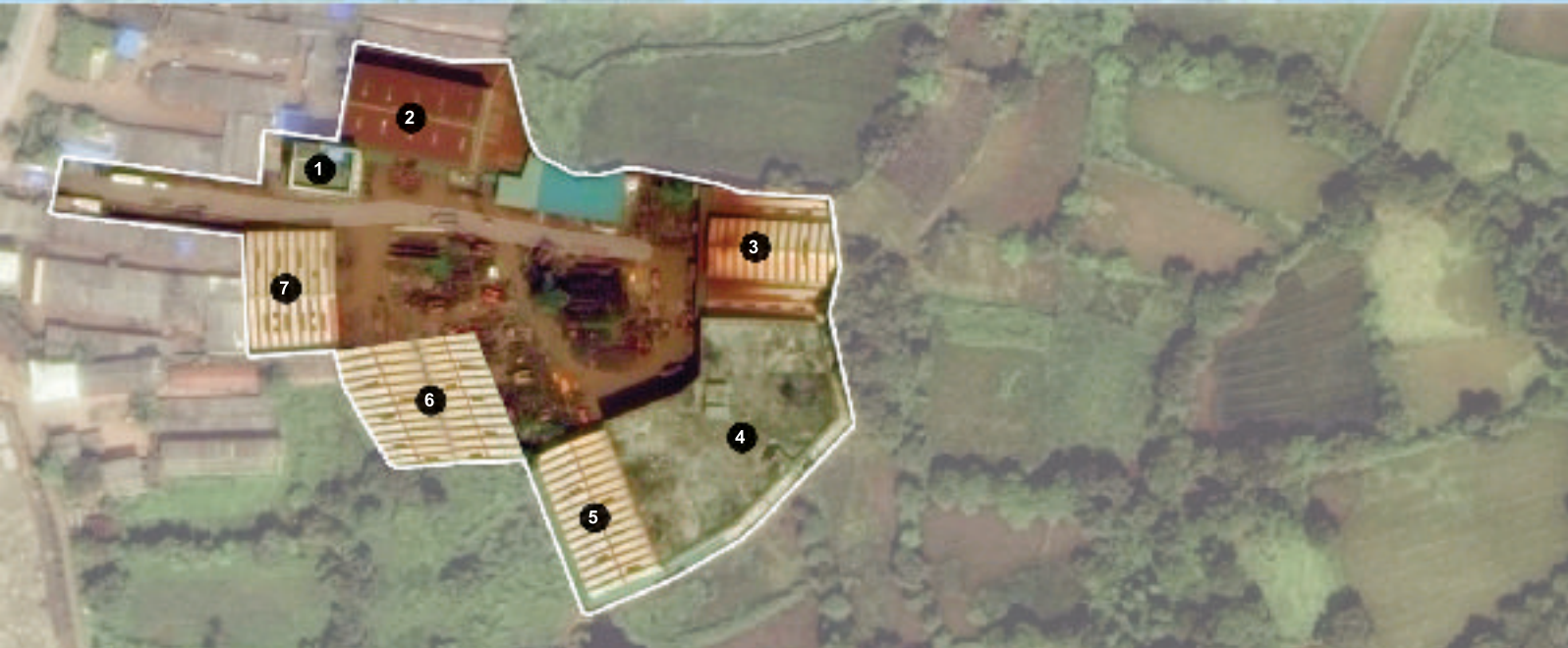
World's One Stop Foundation Shop



KIPL has the manufacturing facility at the Taloja Navi Mumbai. The Plant is spread across 5 acres of prime land developed by different sheds and RCC structures as per the department requirement for the best work to be carried out according to the Departments.

The Departments can be categorized as:

- 1) **OFFICE**
- 2) **FABRICATION SHOP**
- 3) **FORGING DEPARTMENT
HEAT TREATMENT**
- 4) **MACHINE MALL/ CNC ROOM
CONVENTIONAL LATHE SHOP**
- 5) **STORE**
- 6) **KELLY FABRICATION SHOP
WINCH DEPARTMENT**
- 7) **PRESS SHOP / CNC PROFILE**



ABOUT US

KAMAR a producer of Kelly Bar, Drilling tools for Piling & Foundation equipment's.

The main products of our company include Kelly Bar, Drilling Buckets, Augers, Core Barrels, Casings, Tremmie Pipe Sockets, Drilling Bits and Cutter teeth, etc. from small to big diameters i.e. 400mm to 3000mm, Heavy duty (HD) & Super Heavy Duty (SHD) for application on clay or rock. Taking "Improving the level of foundation construction technology" as our mission and by depending on a group of engineers and skilled workers with years of experience in foundation drilling engineering and construction design, our products have reached the advanced level in INDIA in terms of the technology and quality as well.

With the latest production facilities and factory, we have completed the designs of drilling tools/attachments and construction methods in many large-scale and complicated foundation projects such as Delhi metro, Chennai metro, Mumbai metro and Monorail which has helped us to win a good reputation among our clients with excellent products and services.

Our efforts to bring forth a world class product range have been leveraged by the support from world class infrastructure. Laced with sophisticated machines and all kinds of amenities, we have been able to deliver our range in bulk well within the limitations of time. Our facility is divided into specialized units like production department, warehouse and packaging department, quality testing laboratory and other units to see through the smooth functioning of our business. Our Infrastructure provides for customization of our product range to comply with the specifications of our clientele.

Our aim is client satisfaction for service before & after sales.

INTRODUCTION



KAMAR INFRASTRUCTURE

A professional manufacturer of Kelly bar, possesses a leading position of Kelly bar manufacturer in INDIA.

We manufacture Kelly bars of

BAUER, SOILMEC, MAIT, CASAGRANDE, IMT & OTHER PILING RIGS

KAMAR A Producer Of Drilling Tools For Piling & Foundation Equipments.

KAMAR Designs, Manufactures & Markets **Augers, Buckets, Core Barrels & Casing**

From Small To Big Diameters i.e. 400mm To 3000mm Heavy Duty (HD) & Super Heavy Duty (SHD) For Application On Clay Or Rock. Experience Quality With Understanding Of Our Clients' Needs Without Forgetting To Be Competitive Has Determined Our Success.

KAMAR Specializes In Manufacture Of Desander, Pumps, Piling Winches, Dwall Grabs, Rebar Couplers & Drilling Rig Parts And Components.



KELLY



KELLY SPARES



DRILLING TOOLS



WEAR PARTS



CASING



DESANDER



PUMPS



PILING WINCHES



DWALL GRABS



REBAR COUPLERS



ANCHORS



VIBRO SPARES



COMPANY PROFILE

Established in 2005, as a sole proprietorship firm in Taloja, Mumbai, Kamar Infrastructure Pvt. Ltd. has created a niche of its own in the market. Owing to the vast industrial expertise, we have become highly proficient in our domain. We have come up as the most trusted manufacturer, exporter and supplier of dimensionally precise and functionally efficient range of drilling tools and other accessory equipment. With customization facility available, we have been able to satisfy our clients. Complying with international quality standards, we make use of high quality raw material and advanced technology in fabrication of our range.

KAMAR highly focuses on international co-operation and communication. Till present, our products have been exported to many different countries and regions such as Dubai, Singapore, Malaysia, Bangladesh, Iraq, Saudi Arabia, South Africa, Sri Lanka, USA, Australia, etc.

Meanwhile, the brand name recognition is enhancing. In order to offer better local service, KAMAR established a branch in MALAYSIA, Sri Lanka, USA. We have experienced technical team and sales team there. Furthermore, KAMAR founded Dealers in Bangladesh, South Africa, Australia, UAE & Saudi Arabia, Turkey, etc.

With the enlargement of company scale and the increasing of international business, KAMAR pays more and more attention to the international cooperation and communication. Experience quality with understanding of our client's needs without forgetting to be competitive has determined our success.

KELLY BARS

FOR BAUER - IMT - SOILMEC - CASAGRANDE - MAIT & OTHER PILING RIGS

A Professional manufacturer of **Kelly Bars**, possesses a leading position of **Kelly Bar's** manufacturer in **INDIA**.





FEATURES OF KELLY BAR

Our Kelly bar tubes imported from Mannesmann, Germany suppliers to OEM's. Special hot-treatment enhances the material's strength more than 800Mpa. All other material are imported from EUROPE. Rib made of alloy hot-treated specially enjoy both high hardness and perfect welding performance, high abrasion-resistance leads to high-reliability. Designed according to advanced Modular-element principle with six ribs laid on tubes.

The advantages of our Kelly bar such as low weight, high strength, high abrasion-resistance, highreliability are safeguarded by technologically superior process, advanced machining equipments and special fixtures.

All Kelly bars are available in interlocking, friction and partially lockable version. Length, Kelly stub and Kelly dimension can be on request. Complete model series and flexible design and manufacture ensure the ability to supply Kelly bar to match with any model of drilling rigs worked in India & Overseas.

Several service engineers and rich experience of repairing Kelly on job site or in workshop benefit customers to enjoy rapid service.

Computerized Machines For Terminal Joint Fabrication



Stock of Pipes Imported from Mannesmann, Germany



FABRICATION SHOP



Kamar Infrastructure Pvt. Ltd. is a leader in design, manufacturing and selling of Kelly bar for construction rotary drilling rigs in India & Overseas.

Kamar Infrastructure Pvt. Ltd. has been providing quality friction and interlocking Kelly bars for all types of foundation drilling rigs in the market. We can also supply our worldwide customers with Kelly bars that are ideally tailored to your needs with the highest quality and competitive price. We are confident we would be a vital business partner to your construction drilling needs.

KELLY BAR SERVICING

We provide Repairs and maintenance on customer's working site within the period of the product warranty in India & Overseas. We are specialist in repairs and maintenance various kinds of Kelly bars, including Bauer, Soilmec, Mait, Casagrande, IMT Etc. Our experience will save your money and time and help your drilling rigs work properly.



STOCK OF KELLY SPARES

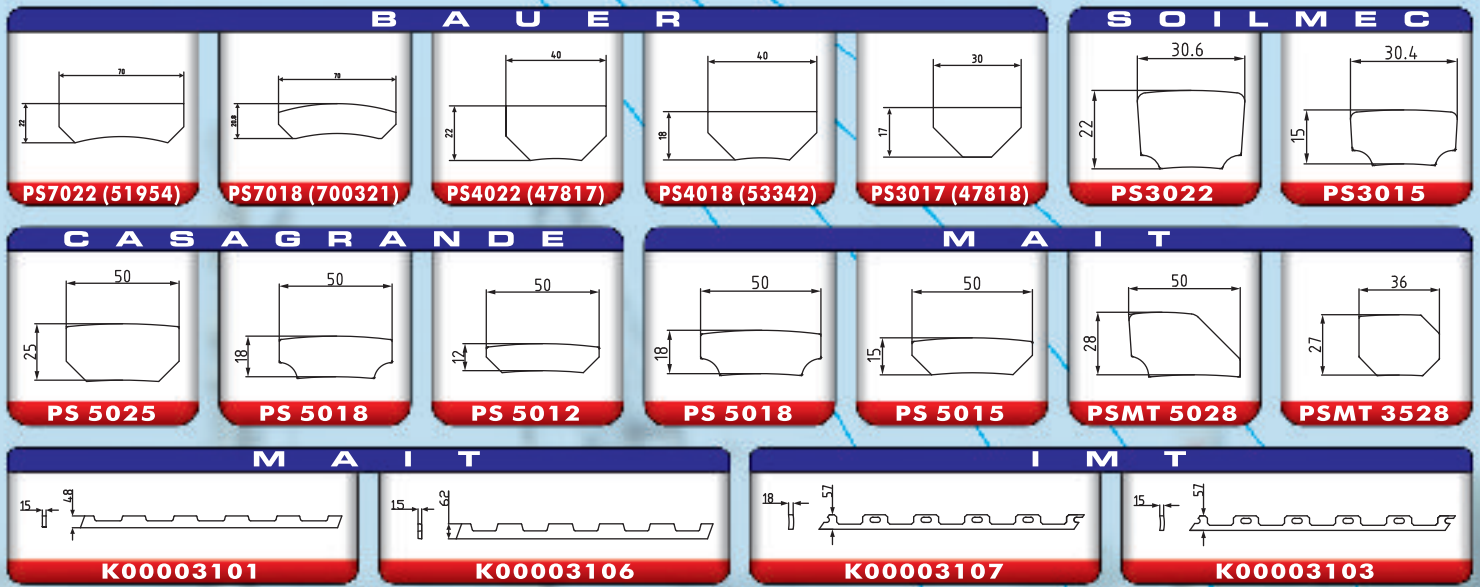
STORE ROOM



Kamar maintains ample stock of Kelly Spares, Drilling Wear parts Etc. ready in stock so that we can dispatch the materials on the very same day when the orders are received.



KELLY PROFILE STRIPS



KELLY BAR SPARES



COUNTRIES WE SERVED

OMAN
CASAGRANDE
INTERLOCKING

SAUDI ARABIA
BAUER INTERLOCKING
OD 470X13.8X3

SAUDI ARABIA
IMT AF 220
INTERLOCKING
OD 406X12.5X4

TURKEY
SOILMEC SR 60
INTERLOCKING
OD 406X11.5X4

INDIA
JINTAI
INTERLOCKING

U.A.E.
BAUER
BK-28
OD 419X13.5x4

IRAQ
MAIT
INTERLOCKING
OD 368X11.5X4

SAUDI ARABIA
BAUER
INTERLOCKING
OD 368X13X3

KUWAIT
SOILMEC
INTERLOCKING
OD 355X10.5X4

INDIA
BAUER BK15
INTERLOCKING
OD 355X12X3

QATAR
BAUER
BG20
INTERLOCKING

EGYPT
MAIT
INTERLOCKING
OD 368X11.5X4

VENEZUELA
BAUR BK-25
OD 394X12x4

SOUTH AFRICA
SOILMEC R930
INTERLOCKING
OD 482X11.5X3

SINGAPORE
SOILMEC R618 4/48
INTERLOCKING
OD 355

BANGKOK
MAIT HR 180
FRICTION WITH
OD 445X13.5X5

SRI LANKA
MAIT
INTERLOCKING
OD 368X12x3

KUALA LUMPUR
BAUR BG20
INTERLOCKING

SINGAPORE
MAIT HR 360
FRICTION WITH
OD 445X17.5X5

BANGLADESH
BAUER BK 28
INTERLOCKING
OD 419X14X4

AUSTRALIA
BAUER
INTERLOCKING
OD 419X14x4

SRI LANKA
BAUER
INTERLOCKING
OD 394X13X3



DRILLING TOOLS



TOOLS MANUFACTURING

PRESS SHOP



CNC PROFILE



CNC Oxy fuel plate cutting machine size for 3 meter x 13 meter

PRESS SHOP



Hydraulic Press 500 Tons 1 Meter Stroke



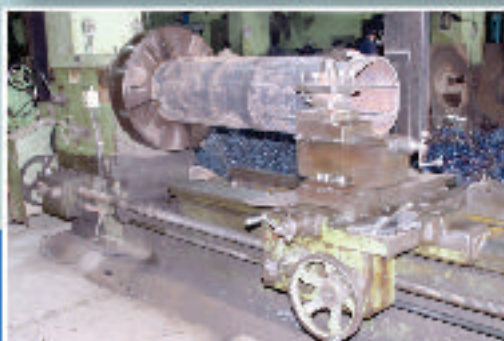
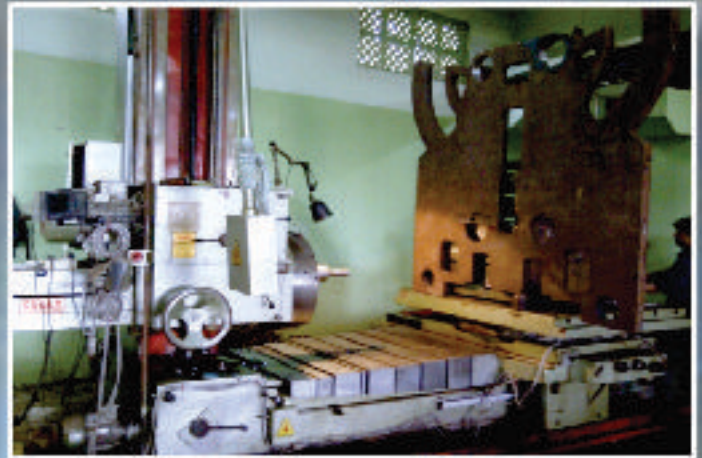
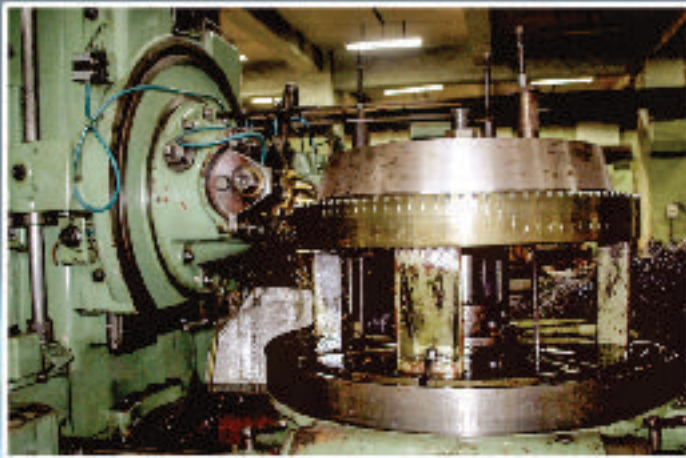
Pipe & Cone Bending Machine 50 MM

FABRICATION

FABRICATION SHED

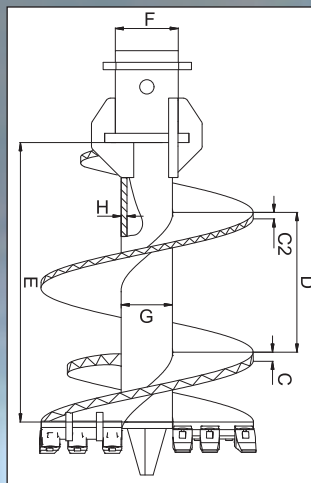


LATHE DEPARTMENT



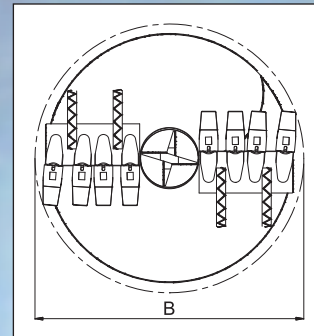
HEAVY DUTY TOOLS

SA-HD

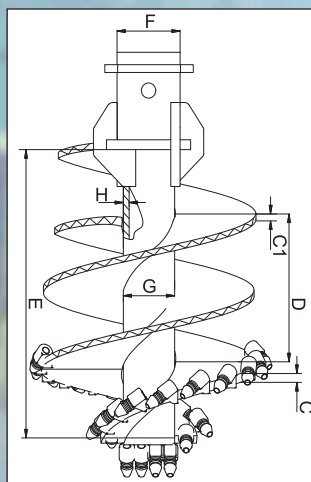
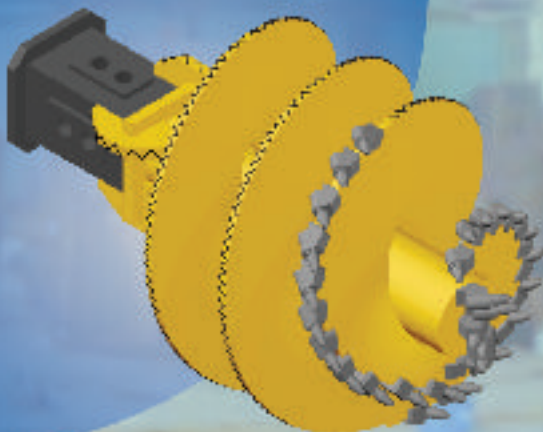


Features :

- T25 / V19 Soil Teeth
- Double Cutting Edge
- Hard Faced with 650BHN Electrode



RA-HD



Features :

- Progressive Shape
- KM-31 / KM-47 Bullet Teeth
- Double Cutting Edge
- Hard Faced with 650BHN Electrode

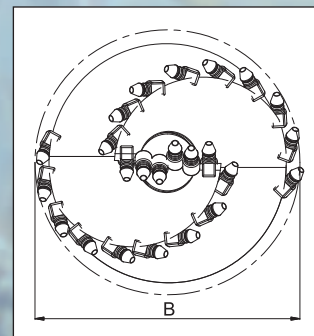


Table for **SA-HD, RA-HD**

A	B	C / C2	D	E	F
PILE DIA (MM)	CUTTING DIA (MM)	FLIGHT THICKNESS (MM)	PITCH (MM)	SHELL LENGTH (MM)	KELLY SIZE (MM)
500	470	40 / 28	500	1000	AS REQD
600	570	40 / 28	500	1000	AS REQD
700	670	40 / 28	500	1000	AS REQD
750	720	40 / 28	500	1000	AS REQD
800	770	40 / 28	500	1000	AS REQD
900	870	40 / 28	500	1000	AS REQD
1000	970	40 / 28	600	1200	AS REQD
1100	1070	40 / 28	600	1200	AS REQD
1200	1170	40 / 28	600	1200	AS REQD
1300	1270	40 / 28	600	1200	AS REQD
1400	1370	40 / 28	600	1200	AS REQD
1500	1470	40 / 28	800	1200	AS REQD

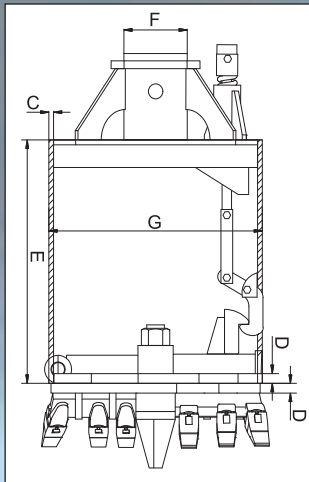
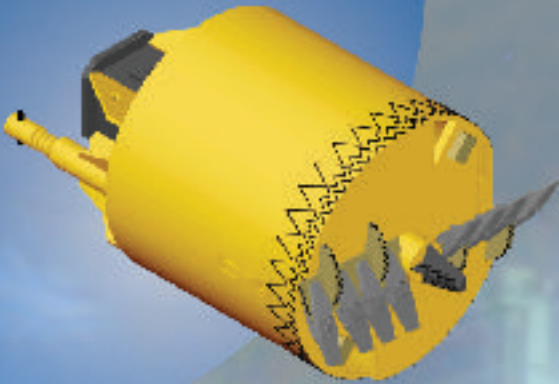
DIAMETER :
400 MM to 3000 MM

LENGTH :
1200 MM to 2250 MM

KELLY BOX :
130x130, 150x150, 200x200 MM

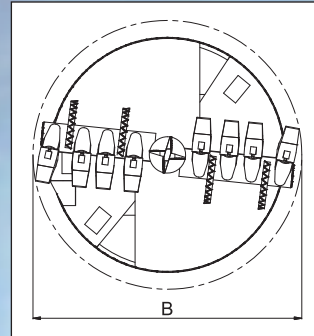
HEAVY DUTY TOOLS

SB-HD

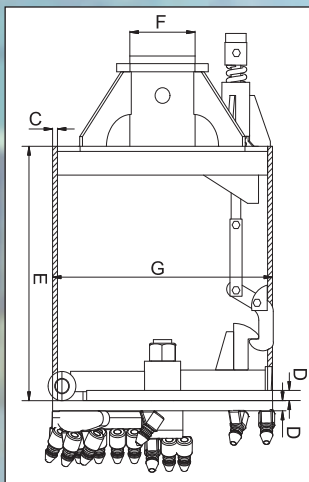
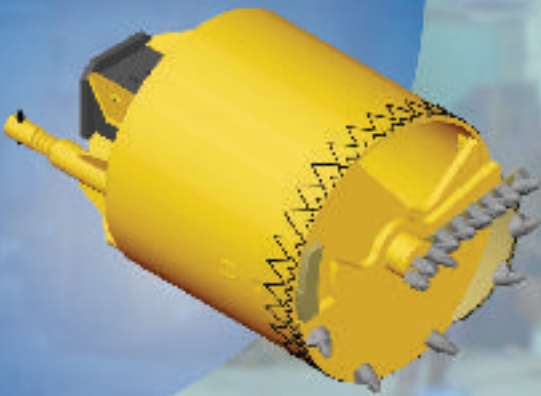


Features :

- T25 / V19 Soil Teeth
- Double Cutting Edge
- Hard Faced with 650BHN Electrode

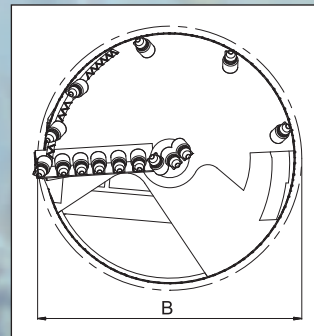


RB-HD

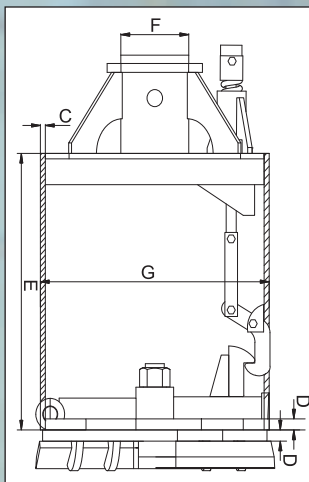
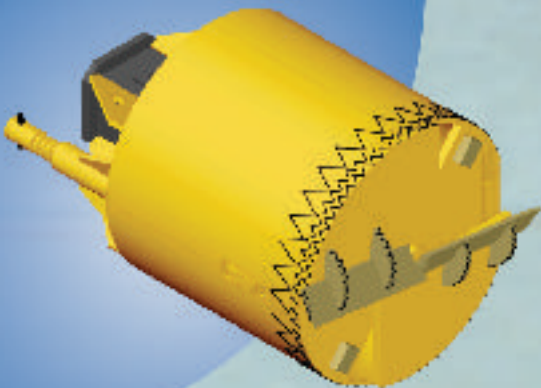


Features :

- KM-31 / KM-47 Bullet Teeth
- Double Cutting Edge
- Hard Faced with 650BHN Electrode

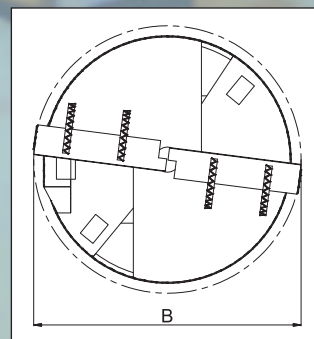


CB-HD



Features :

- Double Cutting Edge
- Hard Faced with 650BHN Electrode



DIAMETER :
400 MM to 3000 MM

LENGTH :
1200 MM to 2250 MM

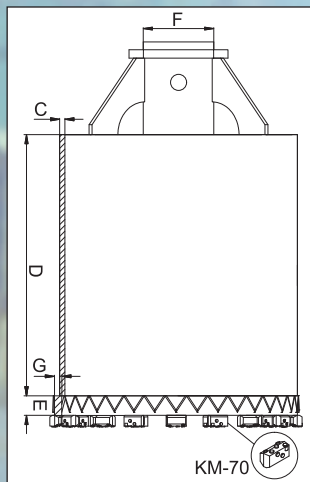
KELLY BOX :
130x130, 150x150, 200x200 MM

HEAVY DUTY TOOLS

Table for **SB-HD, RB-HD, CB-HD**

A	B	C	D	E	F
PILE DIA (MM)	CUTTING DIA (MM)	SHELL THICKNESS (MM)	BASE THICKNESS (MM)	SHELL LENGTH (MM)	KELLY SIZE (MM)
500	470	16	40 + 40	1000	AS REQD
600	570	16	40 + 40	1000	AS REQD
700	670	16	40 + 40	1000	AS REQD
750	720	20	40 + 40	1000	AS REQD
800	770	20	40 + 40	1000	AS REQD
900	870	20	40 + 40	1000	AS REQD
1000	970	20	40 + 40	1000	AS REQD
1100	1070	20	40 + 40	1000	AS REQD
1200	1170	20	40 + 40	1000	AS REQD
1300	1270	20	40 + 40	1000	AS REQD
1400	1370	20	40 + 40	1000	AS REQD
1500	1470	25	40 + 40	1000	AS REQD

CR-HD



Features :

- KM-31 / KM-47 Bullet Teeth
- KM-50, KM-55, KM-70
Teeth Welding Bar
- Hard Faced with 650BHN Electrode

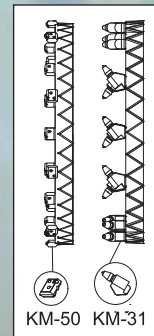
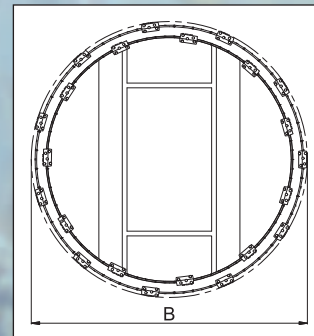


Table for **CR-HD**

A	B	C	D	E	F
PILE DIA (MM)	CUTTING DIA (MM)	SHELL THICKNESS (MM)	SHELL LENGTH (MM)	CORE LENGTH (MM)	KELLY SIZE (MM)
500	470	16	1000	150	AS REQD
600	570	16	1000	150	AS REQD
700	670	16	1000	150	AS REQD
750	720	20	1000	150	AS REQD
800	770	20	1000	150	AS REQD
900	870	20	1000	150	AS REQD
1000	970	20	1000	150	AS REQD
1100	1070	20	1000	150	AS REQD
1200	1170	20	1000	150	AS REQD
1300	1270	20	1000	150	AS REQD
1400	1370	20	1000	150	AS REQD
1500	1470	25	1000	150	AS REQD

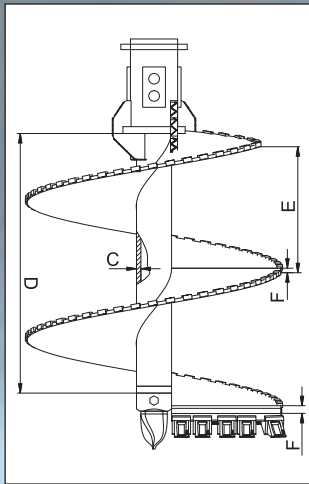
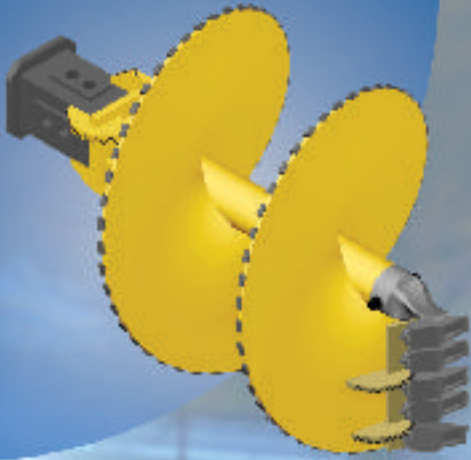
DIAMETER :
400 MM to 3000 MM

LENGTH :
1200 MM to 2250 MM

KELLY BOX :
130x130, 150x150, 200x200 MM

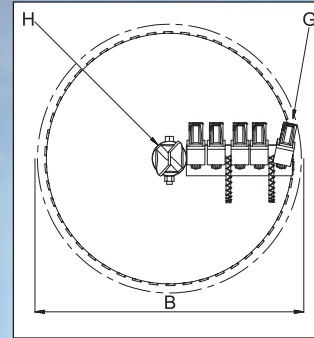
SINGLE START AUGER SUPER HEAVY DUTY

SA-H1

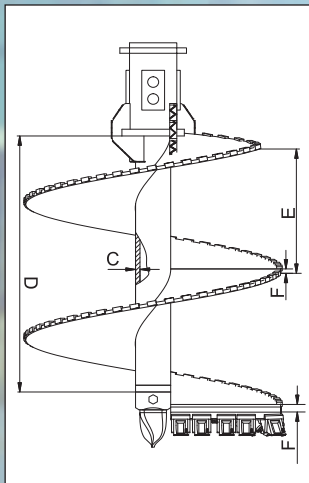


Features :

- Fish Tail Pilot (H)
- Wear Angle Plate
- Single Cutting Edge
- Flat KM-80 / KM-72 Teeth (G)

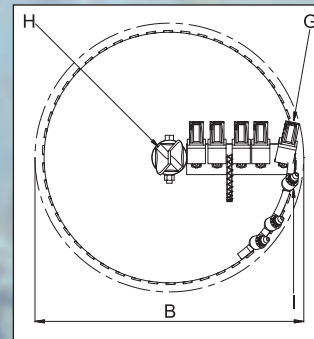


SA-HK1

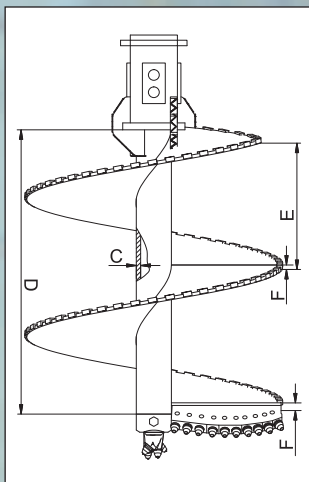


Features :

- Fish Tail Pilot (H)
- Single Cutting Edge
- Flat KM-80 / KM-72 Teeth (G)
- Cutting Edge with KM47-22HD Bullet & KM-85H Holder (I)

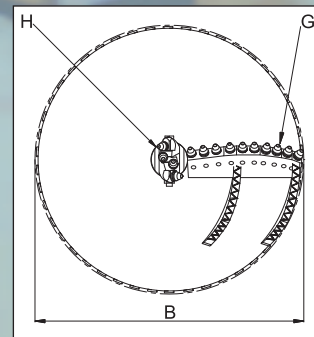


RA-H1



Features :

- KM-4 Pilot (H)
- Wear Angle Plate
- Single Cutting Edge
- Wedge Plate with KM47-22HD Bullet (G)



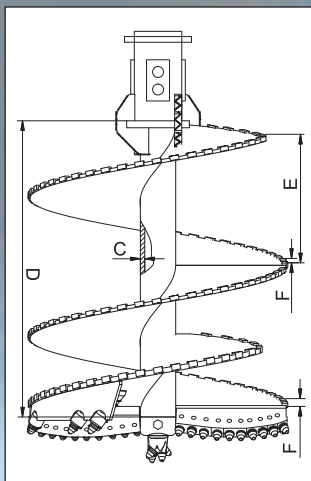
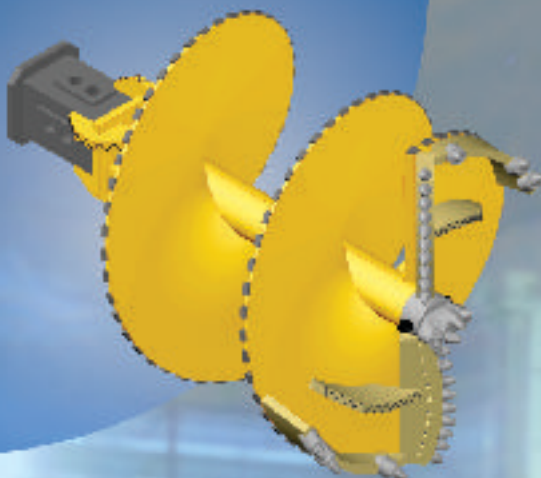
DIAMETER :
400 MM to 3000 MM

LENGTH :
1200 MM to 2250 MM

KELLY BOX :
130x130, 150x150, 200x200 MM

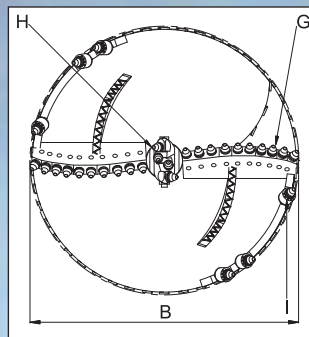
DOUBLE START AUGER SUPER HEAVY DUTY

RA-HK2

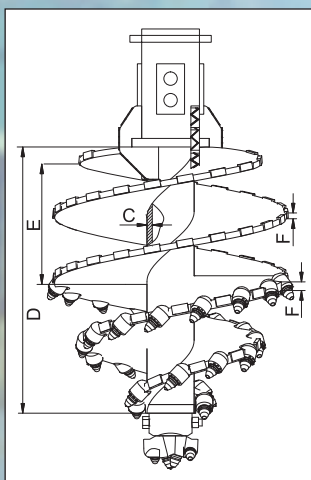


Features :

- KM 4 Pilot (H)
- Double Cutting Edge
- Wedge Plate with KM47-22HD Bullet (G)
- Cutting Edge with KM47-22HD Bullet & KM-85H Holder (I)



RA-HC2



Features :

- Progressive Shape
- Wear Angle Plate
- Double Cutting Edge
- KM47-22HD Bullet & KM-85H Holder (G)
- KM 4 Pilot (H)

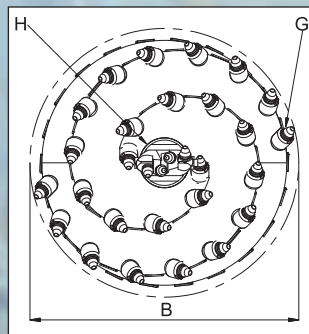


Table for SA-H2, SA-HK2, RA-H2, RA-HK2, RA-HC2

A	B	C	D	E	F
PILE DIA (MM)	CUTTING DIA (MM)	SHELL THICKNESS (MM)	SHELL LENGTH (MM)	PITCH LENGTH (MM)	FLIGHT THICKNESS (MM)
600	570	25	1200	300 + 500	40 + 28
700	670	25	1200	300 + 500	40 + 28
750	720	25	1200	300 + 500	40 + 28
800	770	25	1200	300 + 500	40 + 28
900	870	25	1200	300 + 500	40 + 28
1000	970	25	1200	400 + 600	40 + 28
1050	1020	25	1200	400 + 600	40 + 28
1200	1170	25	1200	400 + 600	40 + 28
1300	1270	32	1200	400 + 600	40 + 28
1500	1470	32	1200	400 + 600	40 + 28
1800	1770	32	1200	400 + 600	40 + 28
2000	1970	32	1200	400 + 600	40 + 28
2200	2170	32	1200	400 + 600	40 + 28
2500	2470	32	1200	400 + 600	50 + 28

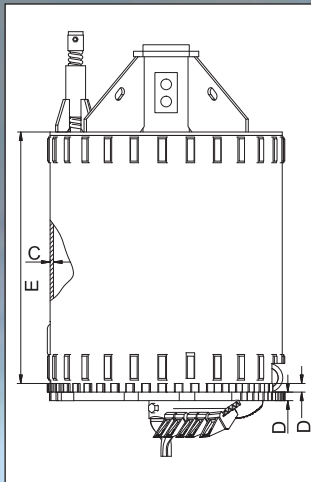
DIAMETER :
400 MM to 3000 MM

LENGTH :
1200 MM to 2250 MM

KELLY BOX :
130x130, 150x150, 200x200 MM

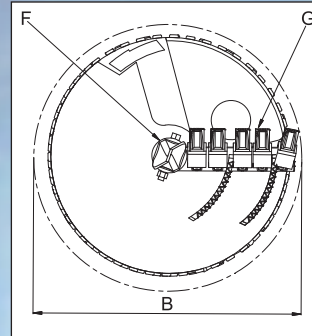
DRILLING BUCKET SINGLE EDGE SUPER HEAVY DUTY

SB-H1

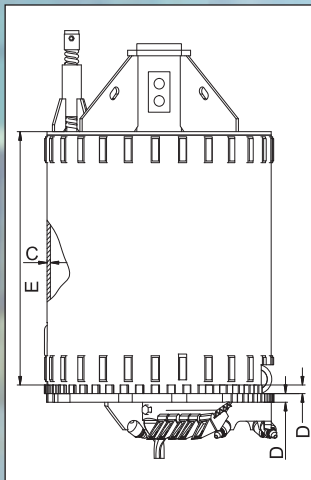


Features :

- Fish Tail Pilot (F)
- Flat Teeth KM-80/KM-72 Teeth (G)
- Vent Pipe
- Wear Strip
- Single Cutting Edge

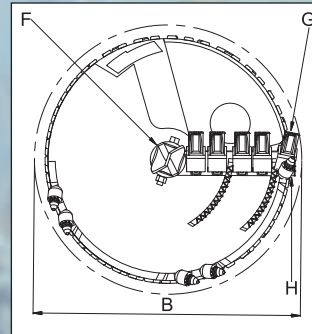


SB-HK1

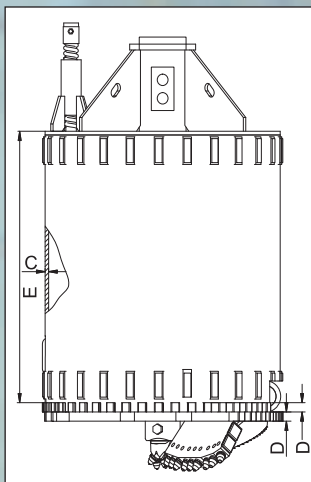
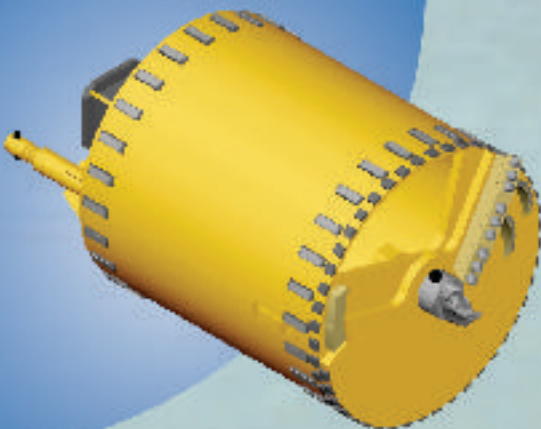


Features :

- Fish Tail Pilot (F)
- Flat Teeth KM-80/KM-72 Teeth (G)
- Single Cutting Edge
- Cutting Edge with KM47-22HD Bullet & KM-85H Holder (H)
- Wear Strip
- Vent Pipe

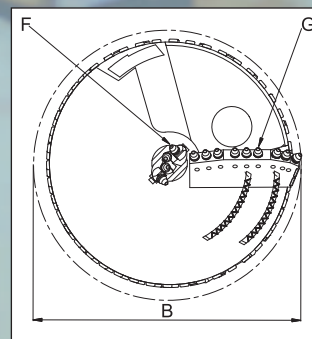


RB-H1



Features :

- KM 4 Pilot (F)
- Wedge plate with KM47-22HD Bullet (G)
- Wear Strip
- Single Cutting Edge



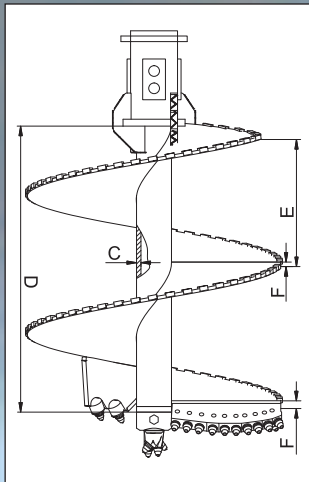
DIAMETER :
400 MM to 3000 MM

LENGTH :
1200 MM to 2250 MM

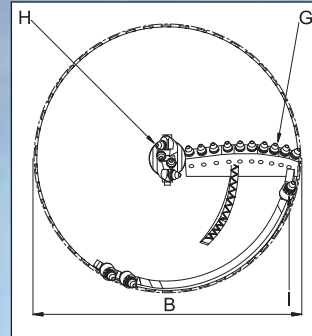
KELLY BOX :
130x130, 150x150, 200x200 MM

SINGLE START AUGER SUPER HEAVY DUTY

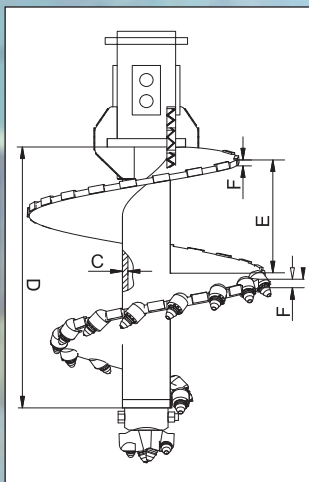
RA-HK 1



- Features :**
- Single Cutting Edge
 - KM-4 Pilot (H)
 - Wear Angle Plate
 - Cutting Edge with KM47-22HD Bullet & KM-85H Holder (I)
 - Wedge Plate with KM47-22HD Bullet (G)



RA-HC1



- Features :**
- Progressive Shape
 - KM 4 Pilot (H)
 - Wear Angle Plate
 - Single Cutting Edge
 - KM47-22HD Bullet & KM-85H Holder (G)

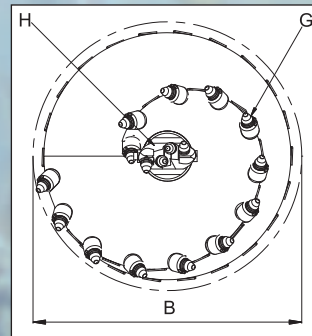


Table for **SA-H1, SA-HK1, RA-H1, RA-HK1, RA-HC1**

A	B	C	D	E	F
PILE DIA (MM)	CUTTING DIA (MM)	SHELL THICKNESS (MM)	SHELL LENGTH (MM)	PITCH LENGTH (MM)	FLIGHT THICKNESS (MM)
600	570	25	1200	500	40 + 28
700	670	25	1200	500	40 + 28
750	720	25	1200	500	40 + 28
800	770	25	1200	500	40 + 28
900	870	25	1200	500	40 + 28
1000	970	25	1200	600	40 + 28
1050	1020	25	1200	600	40 + 28
1200	1170	25	1200	600	40 + 28
1300	1270	32	1200	600	40 + 28
1500	1470	32	1200	800	40 + 28
1800	1770	32	1200	800	40 + 28
2000	1970	32	1200	800	50 + 28
2200	2170	32	1200	800	50 + 28
2500	2470	32	1200	800	50 + 28

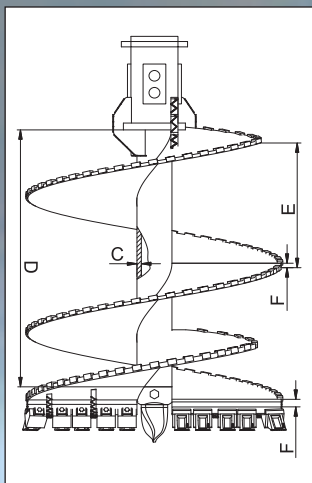
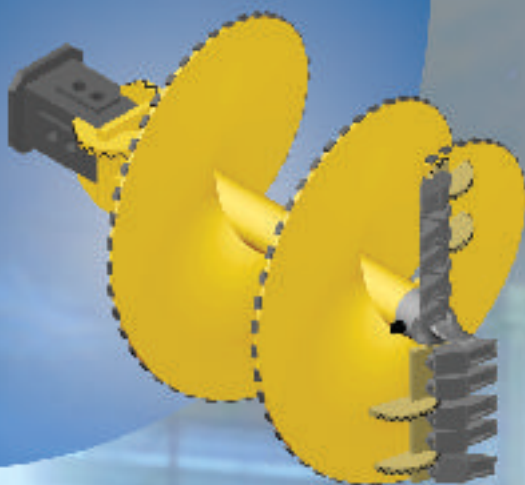
DIAMETER :
400 MM to 3000 MM

LENGTH :
1200 MM to 2250 MM

KELLY BOX :
130x130, 150x150, 200x200 MM

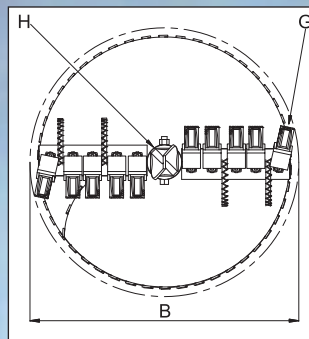
DOUBLE START AUGER SUPER HEAVY DUTY

SA-H2

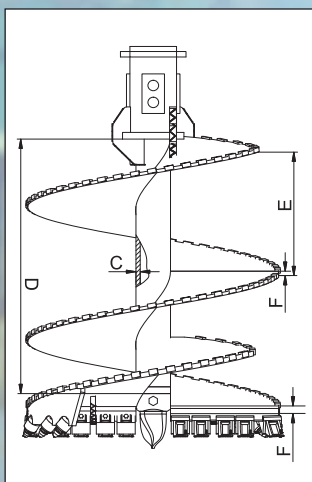


Features :

- Flat KM-80 / KM-72 Teeth (G)
- Fish Tail Pilot (H)
- Wear Angle Plate
- Double Cutting Edge

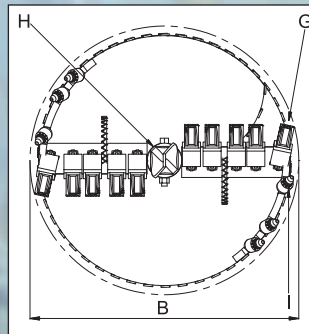


SA-HK2

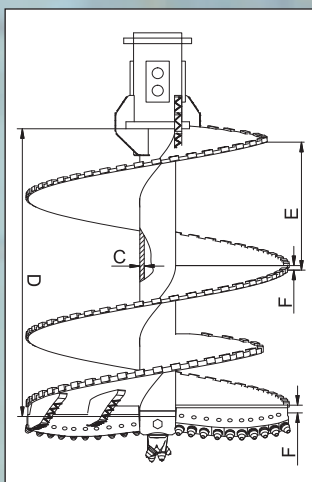
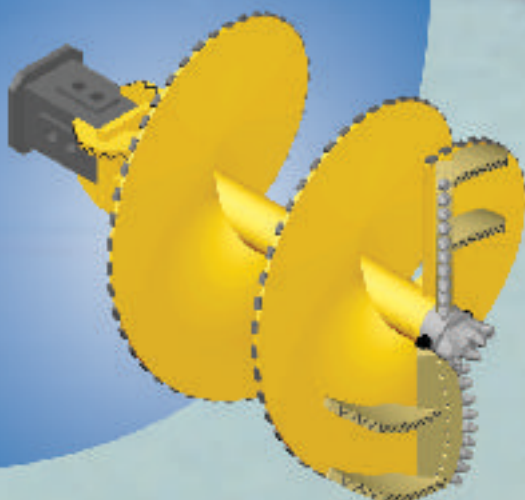


Features :

- Fish Tail Pilot (H)
- Wear Angle Plate
- Flat KM-80 / KM-72 Teeth (G)
- Cutting Edge WITH KM47-22HD Bullet & KM-85H Holder (I)
- Double Cutting Edge

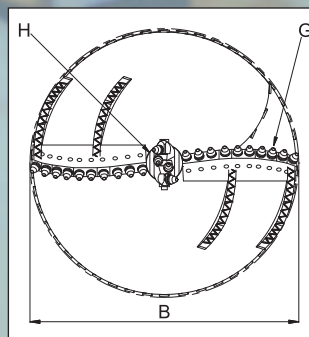


RA-H2



Features :

- KM 4 Pilot (H)
- Wear Angle Plate
- Double Cutting Edge
- Wedge Plate with KM47-22HD Bullet (G)



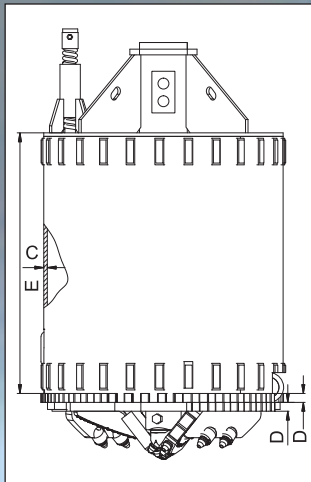
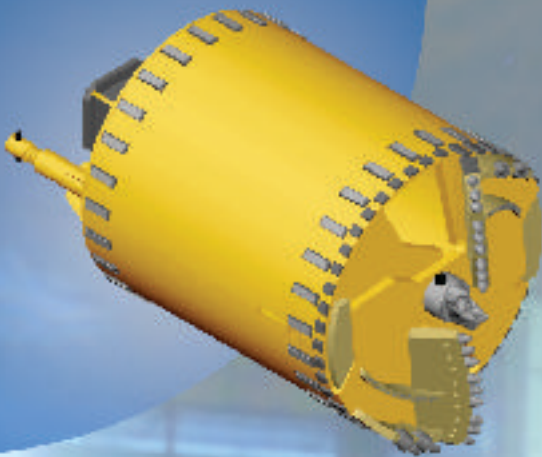
DIAMETER :
400 MM to 3000 MM

LENGTH :
1200 MM to 2250 MM

KELLY BOX :
130x130, 150x150, 200x200 MM

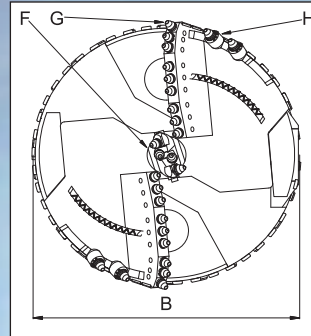
DRILLING BUCKET DOUBLE EDGE SUPER HEAVY DUTY

RB-HK2

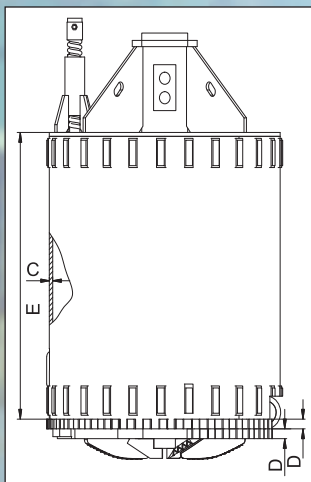


Features :

- KM 4 Pilot (F)
- Double Cutting Edge
- Wedge plate with KM47-22HD Bullet (G)
- Cutting Edge WITH KM47-22HD Bullet & KM-85H Holder (H)
- Wear Strip



CB-H2



Features :

- Cutting Edge Designed As Continuous Cleaning Edge
- Wear Strip
- Vent Pipe
- Double Cutting Edge

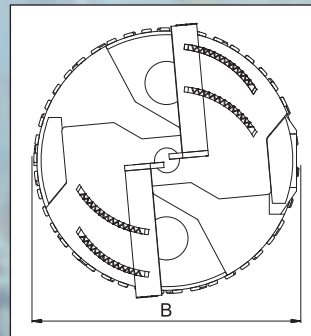


Table for **SB-H2, SB-HK2, RB-H2, RB-HK2, CB-H2**

A	B	C	D	E
PILE DIA (MM)	CUTTING DIA (MM)	SHELL THICKNESS (MM)	BASE THICKNESS (MM)	SHELL LENGTH (MM)
600	570	16	40 + 40	1200
700	670	20	40 + 40	1200
750	720	20	40 + 40	1200
800	770	20	40 + 40	1200
900	870	20	40 + 40	1200
1000	970	20	40 + 40	1200
1050	1020	20	40 + 40	1200
1200	1170	20	40 + 40	1200
1300	1270	20	40 + 40	1200
1500	1470	25	40 + 40	1200
1800	1770	25	50 + 50	1000
2000	1970	25	50 + 50	1000
2200	2170	25	50 + 50	1000
2500	2470	25	50 + 50	1000

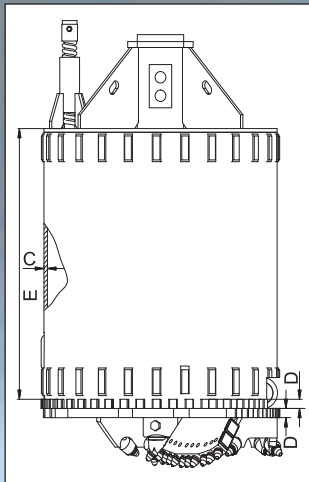
DIAMETER :
400 MM to 3000 MM

LENGTH :
1200 MM to 2250 MM

KELLY BOX :
130x130, 150x150, 200x200 MM

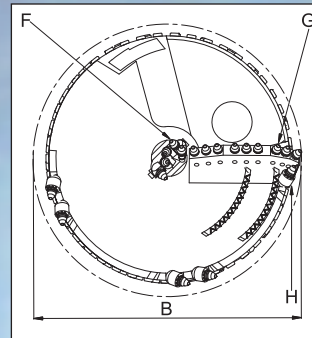
DRILLING BUCKET SINGLE EDGE SUPER HEAVY DUTY

RB-HK 1

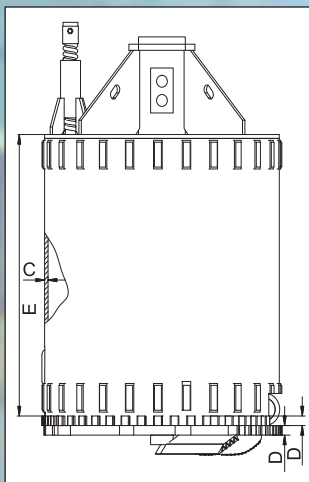
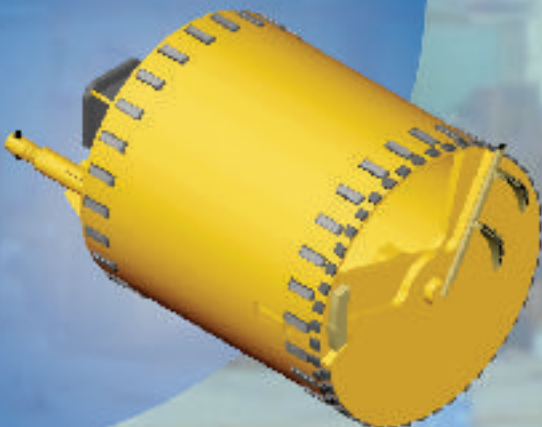


Features :

- KM 4 Pilot (F)
- Wedge plate with KM47-22HD Bullet (G)
- Cutting Edge WITH KM47-22HD Bullet & KM-85H Holder (H)
- Wear Strip
- Single Cutting Edge



CB-H 1



Features :

- Cutting Edge Designed As Continuous Cleaning Edge
- Wear Strip
- Vent Pipe
- Single Cutting Edge

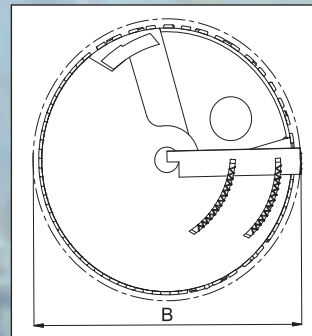


Table for **SB-H1, SB-HK1, RB-H1, RB-HK1, CB-H1**

A	B	C	D	E
PILE DIA (MM)	CUTTING DIA (MM)	SHELL THICKNESS (MM)	BASE THICKNESS (MM)	SHELL LENGTH (MM)
600	570	16	40 + 40	1200
700	670	20	40 + 40	1200
750	720	20	40 + 40	1200
800	770	20	40 + 40	1200
900	870	20	40 + 40	1200
1000	970	20	40 + 40	1200
1050	1020	20	40 + 40	1200
1200	1170	20	40 + 40	1200
1300	1270	20	40 + 40	1200
1500	1470	25	40 + 40	1200
1800	1770	25	50 + 50	1000
2000	1970	25	50 + 50	1000
2200	2170	25	50 + 50	1000
2500	2470	25	50 + 50	1000

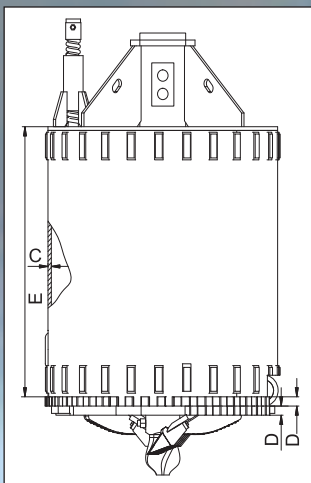
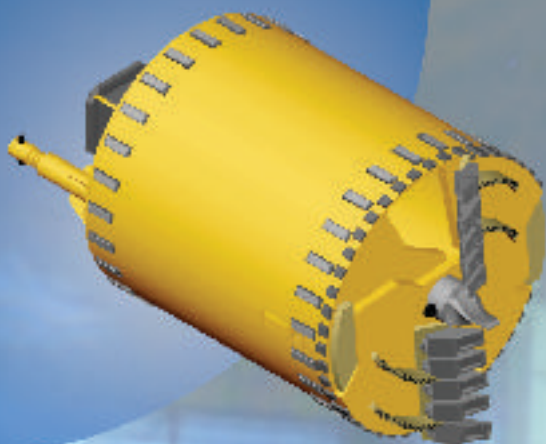
DIAMETER :
400 MM to 3000 MM

LENGTH :
1200 MM to 2250 MM

KELLY BOX :
130x130, 150x150, 200x200 MM

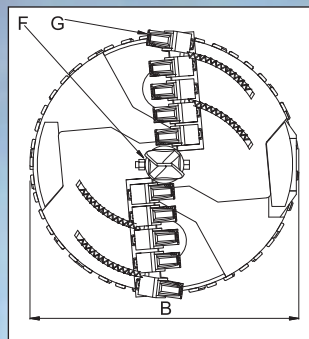
DRILLING BUCKET DOUBLE EDGE SUPER HEAVY DUTY

SB-H2

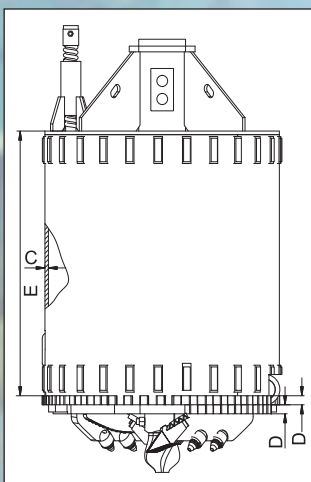


Features :

- Fish Tail Pilot (F)
- Flat Teeth KM-80/KM-72 Teeth (G)
- Vent Pipe
- Wear Strip
- Double Cutting Edge

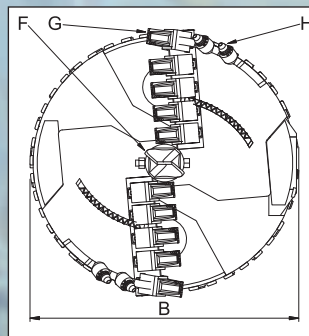


SB-HK2

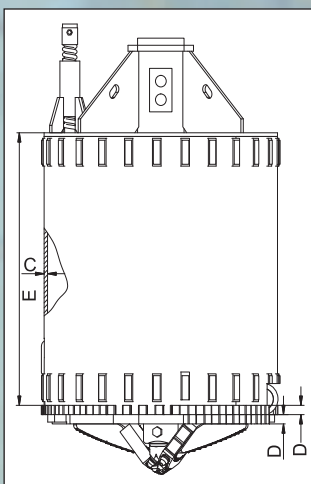
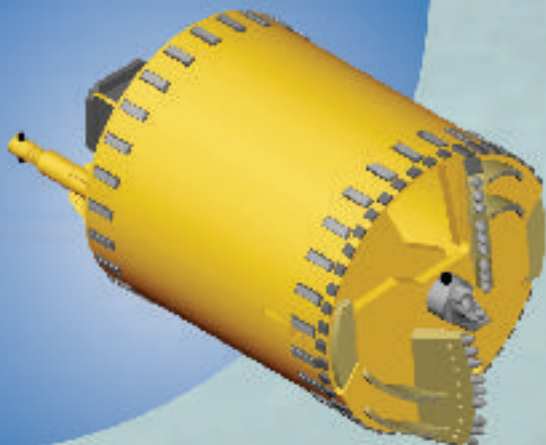


Features :

- Fish Tail Pilot (F)
- Flat Teeth KM-80/KM-72 Teeth (G)
- Double Cutting Edge
- Cutting Edge with KM47-22HD Bullet & KM-85H Holder (H)
- Vent Pipe
- Wear Strip

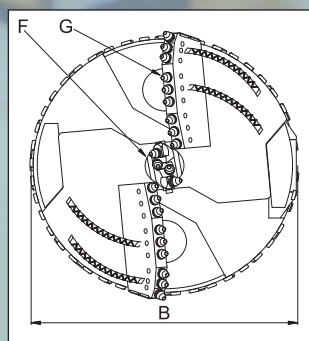


RB-H2



Features :

- KM 4 Pilot (F)
- Wedge plate with KM47-22HD Bullet (G)
- Wear Strip
- Double Cutting Edge



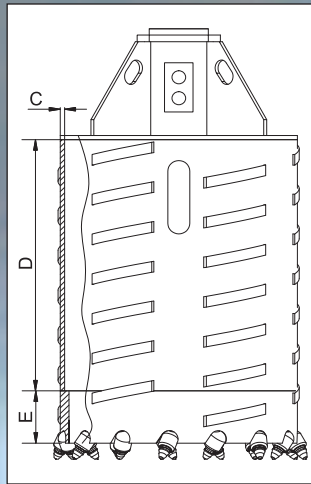
DIAMETER :
400 MM to 3000 MM

LENGTH :
1200 MM to 2250 MM

KELLY BOX :
130x130, 150x150, 200x200 MM

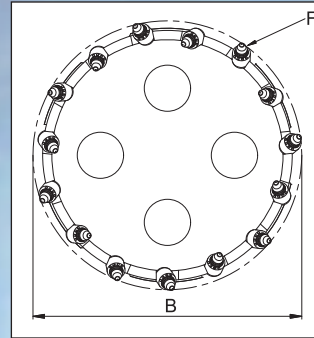
SUPER HEAVY DUTY CORE BARREL

CR-HB

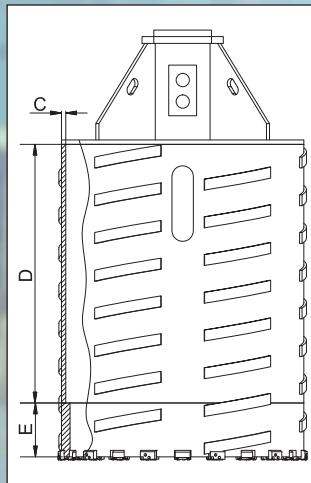


Features :

- KM47-22HD Bullet & KM-85H Holder (F)
- Wear Strips

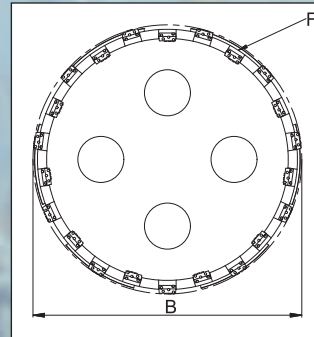


CR-H2

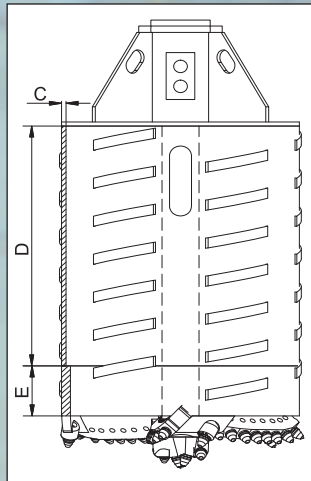


Features :

- KM-50, KM-55, KM-70 Teeth (WELDING BAR) (F)
- Wear Strips

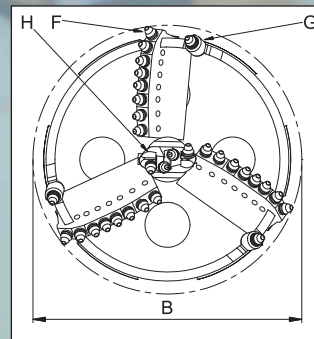


CR-HBX



Features :

- Wedge plate with KM47-22HD Bullet (F)
- Cutting Edge with KM47-22HD Bullet & KM-85H Holder (G)
- KM 4 Pilot (H)



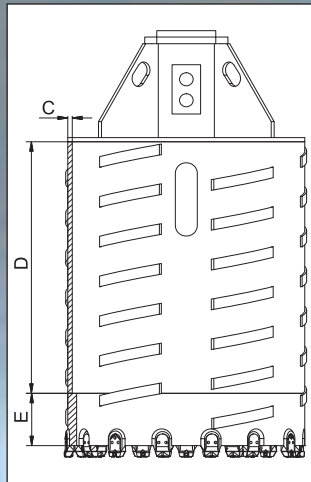
DIAMETER :
400 MM to 3000 MM

LENGTH :
1200 MM to 2250 MM

KELLY BOX :
130x130, 150x150, 200x200 MM

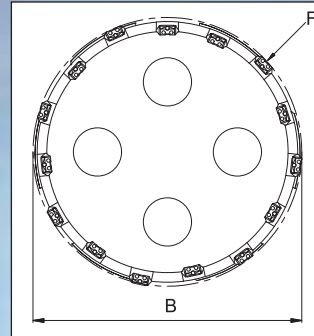
SUPER HEAVY DUTY CORE BARREL

CR-H2R

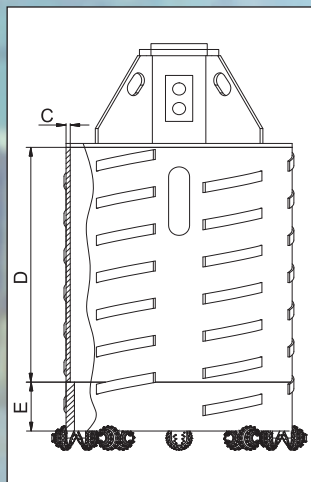


Features :

- KM-39 Replaceable Teeth (F)
- Wear Strips



CR-HRM



Features :

- Roller Bits (F)
- Wear Plates
- Used To Cut Rock Above 80 Mpa.

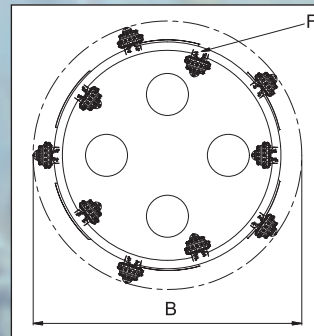


Table for **CR-HB, CR-H2, CR-HBX, CR-H2R, CR-HRM**

A	B	C	D	E
PILE DIA (MM)	CUTTING DIA (MM)	SHELL THICKNESS (MM)	SHELL LENGTH (MM)	CORE LENGTH (MM)
600	570	16	1200	250
700	670	20	1200	250
750	720	20	1200	250
800	770	20	1200	250
900	870	20	1200	250
1000	970	20	1200	250
1050	1020	20	1200	250
1200	1170	20	1200	250
1300	1270	20	1200	250
1500	1470	25	1200	250
1800	1770	25	1000	250
2000	1970	25	1000	250
2200	2170	25	1000	250
2500	2470	25	1000	250

DIAMETER :
400 MM to 3000 MM

LENGTH :
1200 MM to 2250 MM

KELLY BOX :
130x130, 150x150, 200x200 MM

BIG DIA TOOLS

Upto 3000 MM



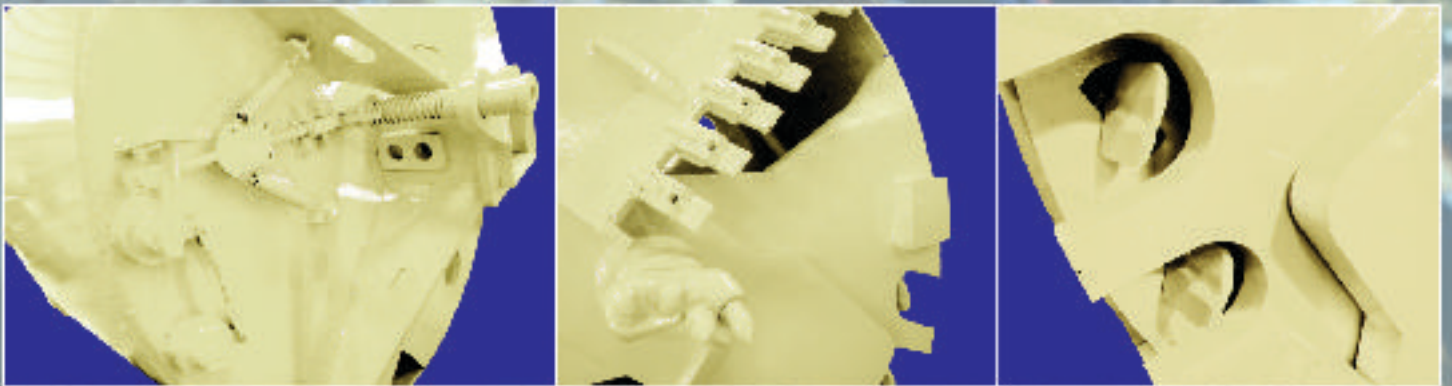
Aiming to satisfy our clients with our qualitative product range.
We offer a range of Drilling tools.

AUGER



- Kamar augers are manufactured in various models to accomplish the requirements for every type of ground drilling conditions.
- In order to increase the resistance of our augers, special compound steels are used on request.
- The Kelly boxes can be manufactured custom sized and shaped for every kind of drilling rigs.
- On request, every type of hard-facing & ware protection is available. We can also use special wear protection plates and sheets.
- We prefer to use our own well-known branded carbide picks and teeth.
- For soil conditions, long attack, high penetration ability special excavation type teeth and tungsten carbide inserts protected teeth options are available as per the requirements.

BUCKETS



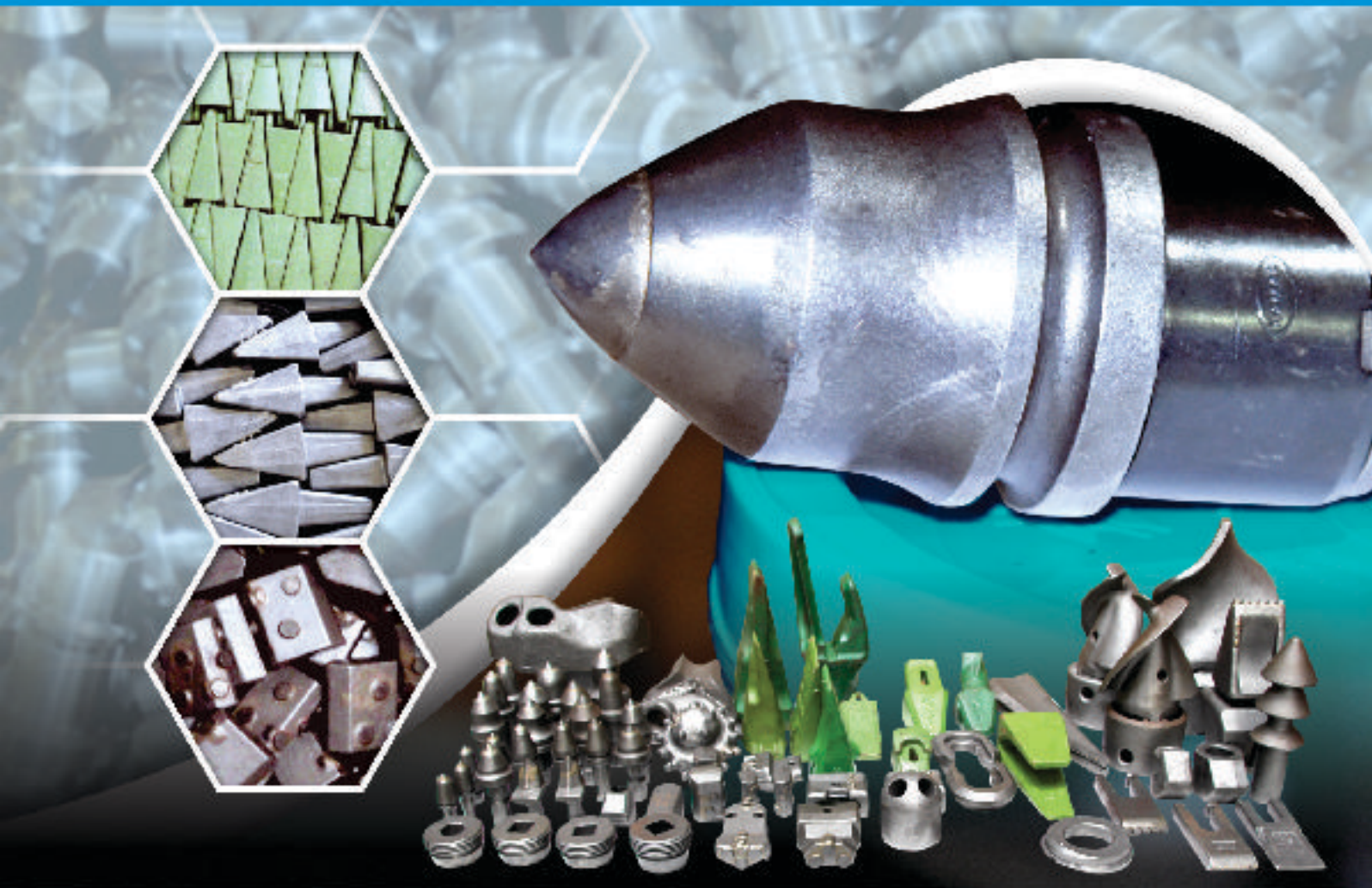
- Kamar buckets are designed to show the best performance at every relevant ground conditions.
- Special interior designs for easy unloading operation.
- The Kelly boxes can be manufactured, custom sized and shaped for every kind of drilling rigs.
- Bottom blades and Kelly boxes are made of high quality steel to assure the longest living of the tool.
- On request, every type of hard-facing and ware protection are available.
- Although our products are based on two different models, on request, custom types can be manufactured. The equipment is composed by teeth or changeable picks, in both cases dimensions are defined according to the geological nature of the soil and to the machine torque. All the parts merely subject to abrasion are welded to hard face ribbing.

CORE BARREL



- Our core barrels have long lifetime by our choice of special steel alloys and welding techniques.
- We are specialized in manufacturing a fine quality range of core barrel cutting rings which are featured with KM47-22 HD bullets, KM-85 Holder, Welding bars, Roller bits and wear strips. These products are highly appreciated for their cost effectiveness and these products are manufactured using superior quality raw materials obtained from reliable vendors. Our products are having competence as well as effectiveness and are used in different industries.
- The Kelly boxes can be manufactured custom sized and shaped for every kind of drilling rigs.
- On request, every type of hard-facing and ware protection are available.
- Although our standard products are based on two different models, on request, custom types can be manufactured.

WEAR PARTS



Kamar Infrastructure is a professional manufacturer & exporter of road milling tools, foundation drilling tools, Coal milling tools & rock drilling tools used for tunneling, trenching, drilling & coal excavating. Having a vast experience in the field, we have created a strong good will among our customers.

We manufacture a superior quality range of wear part, which are used for foundation drilling works, we offer these products in varied specifications. Our products having reliability, efficiency and robustness and we manufacture these products using state of art technologies using latest machines. In addition, these products are available to fulfill the client's requirement.

Backed by strong technical & production experience we are able to deliver the best tools of superior quality and service to meet your request.

As a producer of road mining picks we offer high wear & impact resistance for milling asphalt & concrete road to various depths. Our tungsten carbide picks offer improved wear resistance as well as outstanding fracture tougher characteristic.

Kamar offers a full range of tools & tooling system for mining. Our in-house production facility gives us an edge to deliver economical products & timely delivery ensuring the highest quality of products past.

We offer round shank with insert from 8 to 30 mm and shaft diameters from 10 to 38 mm. a full range of head design, retainer system and inserts is available for your specific requirements. Customized picks can be manufactured upon request.

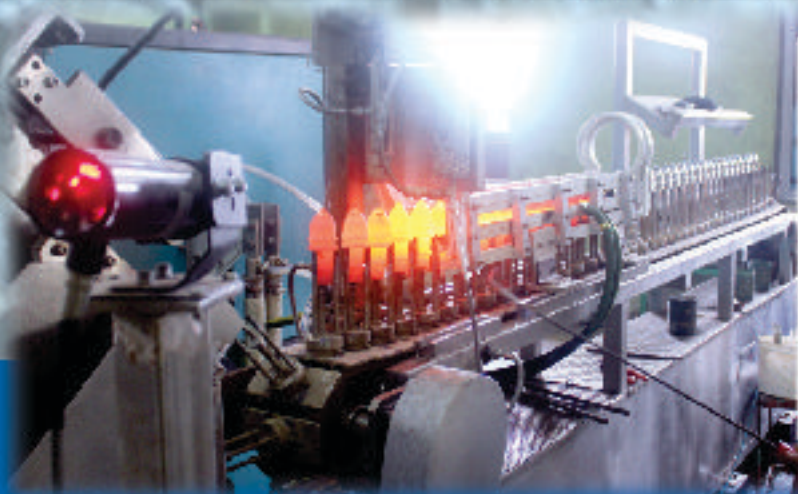
Drill bits are available for blast hole drilling, roof bolting and exploration in diameter from 24 mm to 150 mm with all common use threads. In general our drill bits are equipped with tungsten carbide inserts. For very abrasive rock conditions we recommend our drill bits with polycrystalline insert. Kamar possess high-tech modern machine & manufacturing ability ensuring timely production with superior quality.

WEAR PARTS MANUFACTURING

FORGE SHOP



Kamar Uses The Latest Technology In Forging To Produce The Highest Quality Products At Economical Cost.



WEAR PARTS MANUFACTURING

MACHINE MALL



Kamar uses the modern machining technology to machine parts with highest precisions various CNC turning centers. Including fully automated dual turret lathes machine parts from stock up to four inch in diameter. Larger diameter parts can easily be accommodated in our CNC & VMC Lathe. We also utilize several six and eight spindle screw machine with capacities up to 23.1/4 inches in diameter. Our vertical and horizontal CNC machine center is equipped with multiple pallets large enough to machine parts in excess of 300 Lbs. We also have various secondary lathe, Mills and drill presses.



WEAR PARTS

BULLETS, TEETH & HOLDERS



Main Features

- High durability due to wear-resistant tempered steel
- High grade tungsten carbide tip
- Excellent rotation and secure seating due to a clamping sleeve
- High degree of solder quality
- Extraction groove for easy tooth replacement

Tooth holder

The tooth holders are optimally adapted to the different types of round shank chisels. Rear ejector port facilitates easy tooth replacement. Its compact construction facilitates the execution of complicated cutting geometries and optimal adjustment of tooth position.

CASING SYSTEM

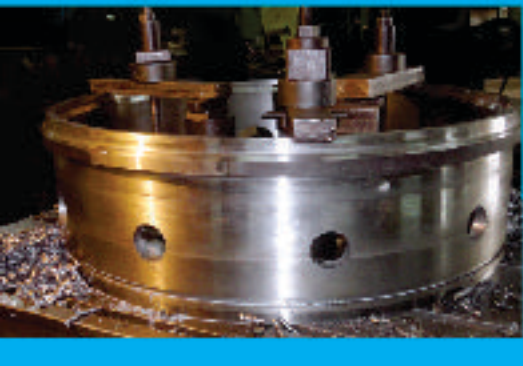
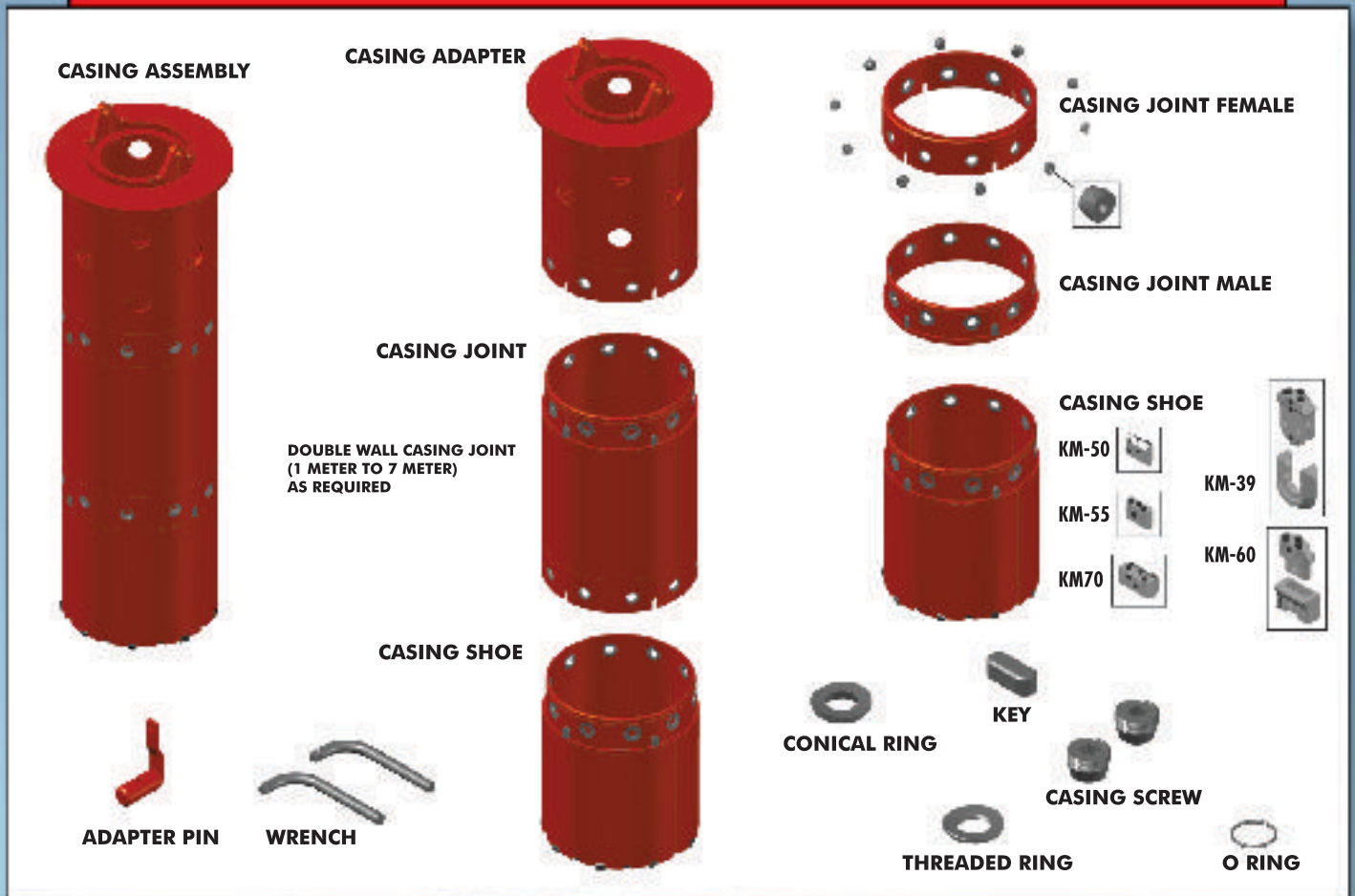


With wide & rich industrial experience in Casing System. We are able to manufacture, supply and export a wide variety of Casing System. This Casing System is manufactured using high grade raw material that is procured from most reliable vendors.

- Kamar Casings and casing shoes have high resistance and easy montage advantages.
- We use high quality carbide protection teeth for our casing shoes.
- Special metal alloys can be used for the joints.
- Montage can be done in a very short time by using screw ring joints.
- We use unique methods in manufacturing our casings. So, even in case of oscillator usage at the field, performance of the product does not decrease.

CASING PARTS

DOUBLE WALL CASING ASSEMBLY WITH 40MM JOINT & 16MM THICKNESS WALL WITH SCREW



DESANDER & PUMPS



KD DESANDER FOR BENTONITE MUD

KD desanders that are manufactured by KAMAR. Are particularly designed to treat Bentonite mud used in drilling and excavating operations with machines equipped with rotating drills or bucket and with forward or reverse circulation. Bentonite mud is treated and washed by separating them from solid polluting matters such as: sands, clays, slimes and organic matters. The first treatment i.e. roughing is carried out on the steel screen whereby parts exceeding 4mm are separated, then mud is stored in the tank and from here it is sucked by the pump and conveyed to the hydro cyclone. Here all particles with granuloma size exceeding 40/50 micron are separated; treated mud flows to a special circuit where a valve keeps the tank level constant to this purpose, if necessary, some mud coming from the hydro cyclone flows back. All elements subject to wear are made of special wear resistant materials that are type selected and tested; all purchased parts are top quality, widely marketed parts that can be easily found on the markets of countries these machines are usually exported to.



TYPICAL APPLICATION

- Bentonite supported piling with grabs small diameter drilling for injection and anchors.
- Well drilling occasionally used in combination with tunneling machines.

TECHNICAL SPECIFICATION

MODEL	KD1500 HP	KD2000 HP
Capacity (m ³ /h)	90	140
Rotation Speed (rpm)	1440	1440
Installed Power (kw)	15	22
Tank Capacity (m ³)	1.2	1.5
Main Screen (m ²)	1.0	1.2
Secondary Screen (m ²)	0.8	1.0
Hydrocyclone	1X280	1X420
Cut Point (d ₅₀)	45	45
Length (m)	3.4	3.8
Width (m)	1.4	1.5
Weight (Kg)	1850	2200

KTM MIXERS FOR BENTONITE MUD



KTM turbo mixers that are manufactured by **KAMAR** are particularly designed to treat Bentonite mud used in drilling and excavating operations. The **KTM** Turbo mixer consists of a sheet steel cylindrical tank, set up on a strong frame. Muds are mixed through a high speed vortex produced by a special pump which, after sucking from the bottom of the tank, sends them back tangentially into the same tank, shaped in order to get highest efficiency. Through a timely operating of the throttle valves of the system, the pump provides for carrying the muds to the storing container or to the using area. Through this process it's possible to obtain homogeneous colloidal and high quality mixture in a short time.

TYPICAL APPLICATION

- Bentonite supported pilling with grabs small diameter drilling for injection and anchors.
- Well drilling occasionally used in combination with tunneling machines.

TECHNICAL SPECIFICATION

MODEL	KTM1000	KTM1500
Tank Capacity (m3)	1.2	1.8
Output (m3/h)	12/15	15/18
Pump Delivery (m3/h)	200	200
Electric Motor (Kw)	11	11
Length (m)	2.4	2.4
Width (m)	1.8	1.8
Height (m)	1.2	1.4
Weight (Kg)	800	900

WELLPOINT DEWATRING DOUBLE ACTING PISTON PUMP



Lubrication and drive
Precisely machined drive gears and an automatic lubrication system provide excellent performance and minimal

Easy access points
Allowing access to the cylinders, stuffing boxes and other critical areas for easy cleaning and maintenance.



Practical valve system
The valve system is fitted with an O-ring seal and a solid bridge section for securing purposes. This allows for quick and easy disassembly, even after prolonged use.

Hard-wearing piston rods
The stainless steel piston rods have been carefully machined to provide an increased service life and minimal maintenance.



TECHNICAL SPECIFICATION

MODEL	KPP-600	KPP-900
Cylinder Diameter (mm)	160	175
Number of Cylinders (NOS)	2	2
Installed Engine Power (Kw)	5.5	7.5
Max. Capacity (m ³ /h)	65	95
Max. Head (m)	22	22
Max Vacuum (m)	9.4	9.4
Bare End Pump Weight (Kg)	825	825
Efficiency, up to (%)	92	92
Shaft Sealing	Gland Packing	Gland Packing
Connection (In)	4 and 6	4 and 6

KVP VERTICAL PUMP

KAMAR VERTICAL PUMPS are basically designed for Construction Industry, for mixing and pumping of Bentonite clay used in pilling work. The Pump has vertical format design, Top Suction, Cantilever Type of Bearing Housings, while the drive motor is located at the top. The design of the pump is such that it mixes as well as it pumps the Bentonite slurry, thus giving the effect of churning the Bentonite Slurry in the tank.

This pump can be hung in the tank by means of chain pulley blocks or any other conventional method so that it can be lowered or raised as per the level of the Bentonite in the tank. Bentonite Mixing Pump is used to mix and pump Bentonite Slurry during the Pilling Process in Construction Industry. The material is such as to withstand the abrasive nature of the slurry during Pilling Process.



TYPICAL APPLICATION

- Constructions

TECHNICAL SPECIFICATION

CAPACITY (m3/hr.)	60-108
Head (mts)	15-27
Sp. Gr. of Slurry	1.15
Pump Speed (RPM)	1400
Wear Parts	Hi-Chrome
Discharge dia. (mm)	75
Suction dia (mm)	125
Mounting	Vertical
Absorbed Power (Kw)	10
Motor Rating (Kw)	11
RPM	1450
Frame Size	160 M
Working Pressure (bar)	16

CENTRIFUGAL WATER PUMP

CONSTRUCTIONAL FEATURES

Pumps are as per DIN 24256 and ISO 2858 and generally conform to API 61 0 (7th Edition). The design is to back pull out type. Largo variety of models are available to operate at 1450 rpm and 2900 rpm at 50 Hz and 1750 rpm and 3500 rpm at 60 Hz.

CASING

The casing has axial suction and top centre line delivery. Smooth hydraulic passages ensure high efficiency. Normal design is for foot mounted pumps. Centre line mounting for special applications are also available.

IMPELLER

The impellers are of enclosed type and semi-open impellers can also be supplied. Hydraulic balancing of impellers is achieved either by back vanes or by balancing holes. The impellers are statically and dynamically balanced. Reliable fixing of the impeller on shaft is achieved by using helicoil insert under impeller nut. To improve NPSH performance, inducer can be supplies.

SHAFT

The shaft is supported by two antifriction bearing to take Residual Axial Thrust and Prevent Axial Float or Radial Run Out. It is fully protected from the liquid handled by means of a shaft Sleeve and Ptfе Gaskets between impeller Nut, Impeller Hub and Shaft Sleeve.

STUFFING BOX

The stuffing box is sealed by gland packing or by mechanical seal. Conversion from gland packing to mechanical seal is achieved by changing some standardized parts. Re-machining of stuffing box is not necessary. Stuffing box cooling is provided for high temperature applications.

BEARINGS

The bearings are oil lubricated. For high temperature application, bearing oil cooling arrangement is provided.

DIRECTION OF ROTATION

Clockwise viewed from driving end.

DRIVE

Pumps can be driven by electric motors.

FLANGES

Standard

Drilling as per ND 1 6

DIN 2533 (Cast Iron — Raised face)

DIN 2543 (steel-Plain face)



TYPICAL APPLICATION

- Water treatment & distribution system for Constructions.

CAPACITY (m3/hr.)	400
TDH (MLC)	140
Temperature (α#)	120
Working Pressure (Bar)	15

PILING WINCHES & ACCESSORIES



WINCHES



We manufacture piling winches made of high quality raw materials & are available in various specifications like 5T, 7.5T & 10T. The number of drums available are 1 or 2 for all types of winches & the wire rope diameter are 25mm, 28mm & 32mm respectively.

TECHNICAL SPECIFICATIONS

TYPE	5T	7.5T	10T
No. of DRUM	1 OR 2	1 OR 2	1 OR 2
WIRE ROPE	25mm	28mm	28mm
H.P. REQUIRED	65	83	98

Note: We reserve the right of making technical alterations.

CHISSEL



BAILER



A FRAME



HAMMERING MONKEY



GANTRY WHEEL



DMC ROD



DIAPHRAGM WALLS GRABS



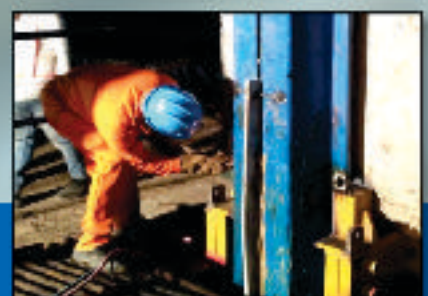
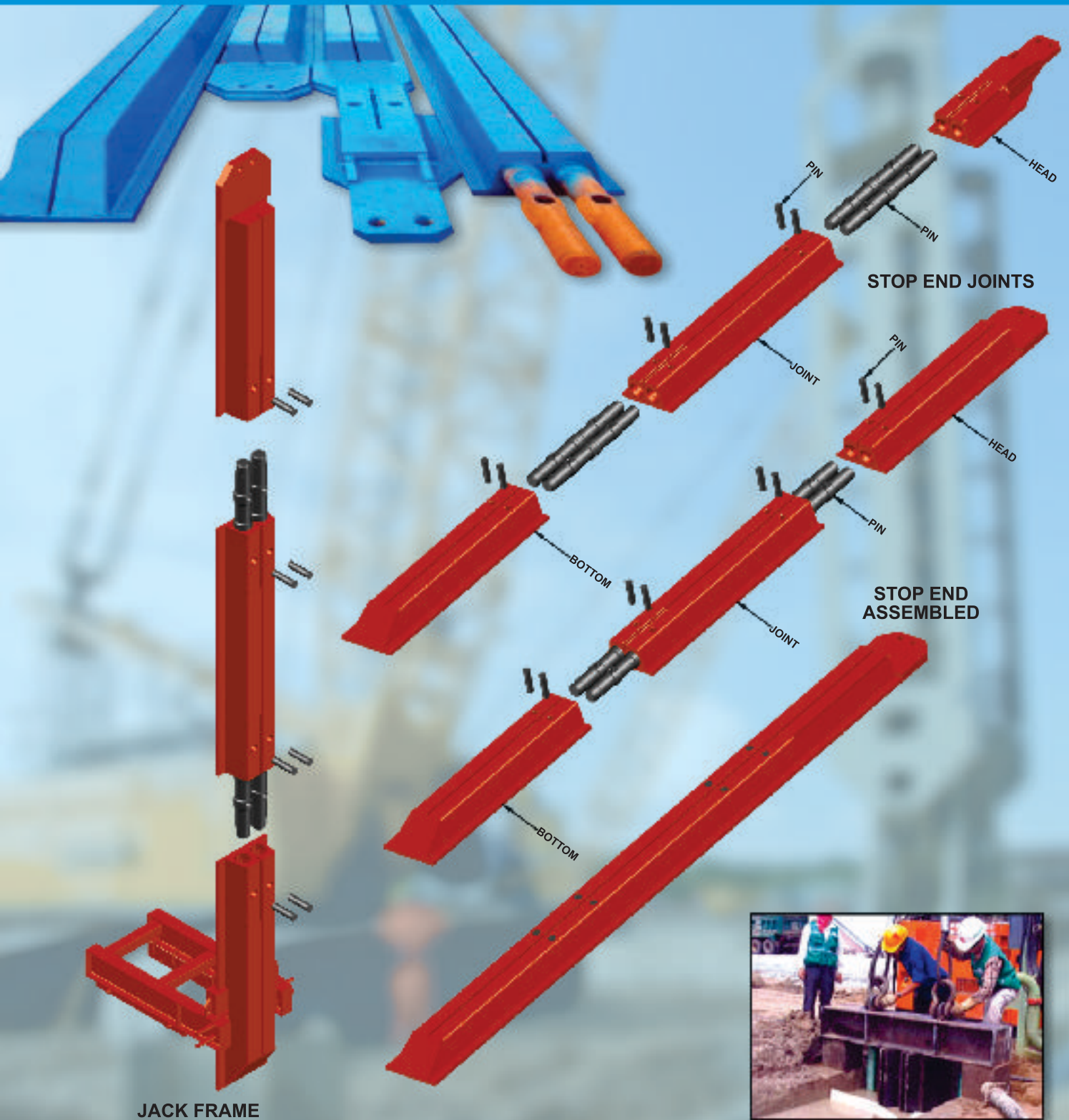
HEAVY DUTY REVOLVING TELESCOPIC KIT FOR DIAPHRAGM WALLS

Suitable for HR-180 Piling Rig Consisting of

- Square Type Kelly Bar of 3 Elements for 32m Depth.
- 180 Degree Revolving Guide Frame which Revolves by Hydraulic Motor.
- Left & Right Hydraulic Hose Reel.
- Cathead With 4 o's Sheave
- Kelly Bar Guide
- Rectangular Grab Body with Interchangeable Jaws from 600mm to 1000mm.



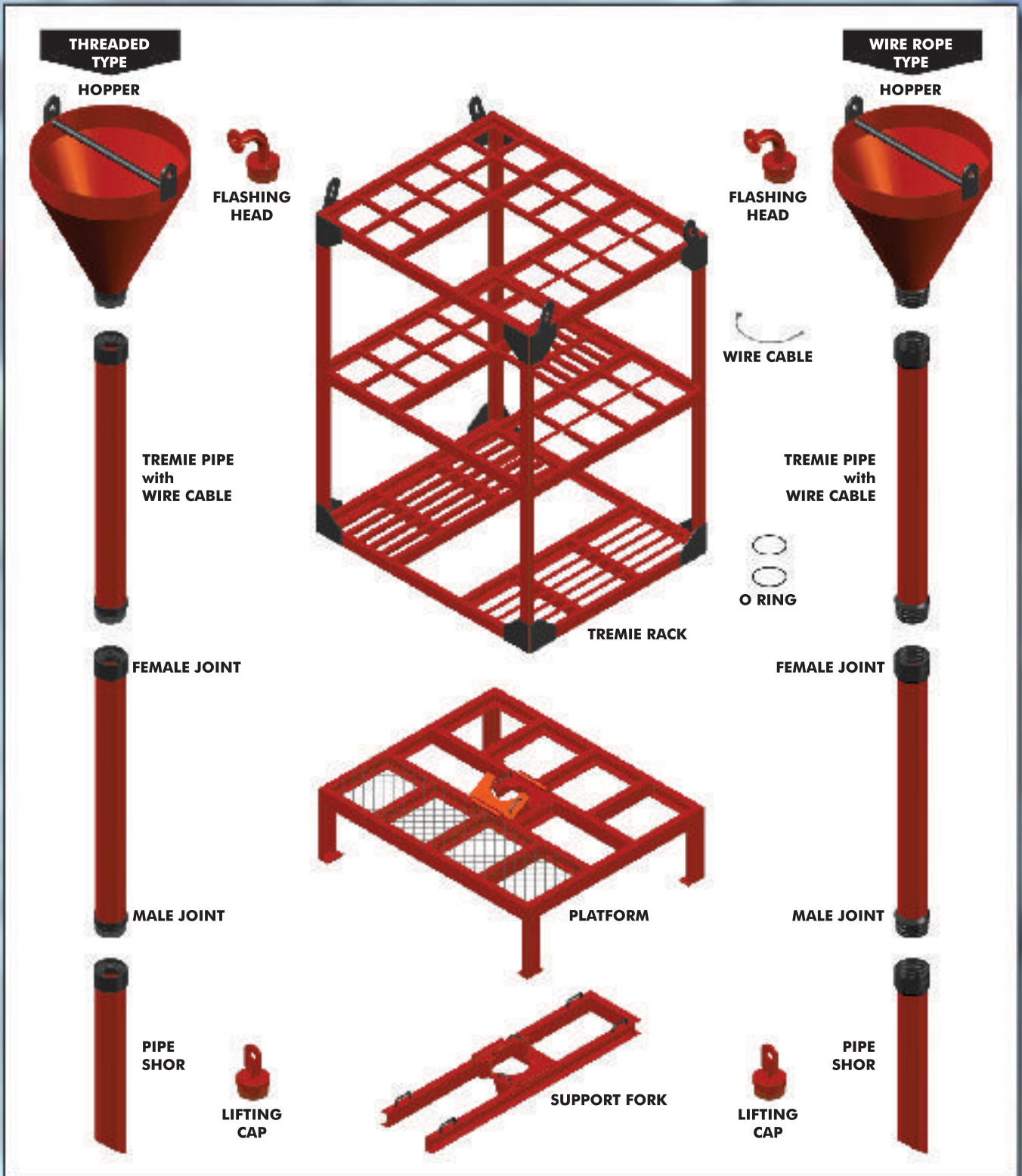
STOP END



TREMIE PIPES & ACCESSORIES



TREMIE PIPES



COUPLERS

INTRODUCTION



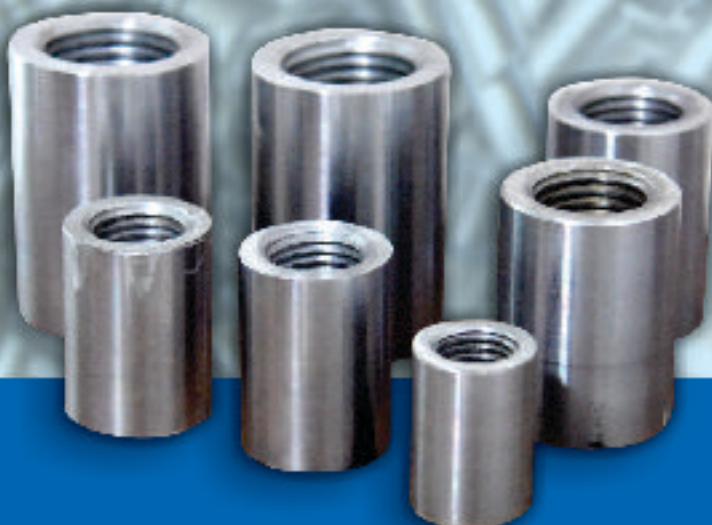
KAMAR a producer of a parallel-threaded mechanical splicing system designed for the connection of concrete reinforcing bars 14MM to 50MM.

Taking "Improving the level of foundation construction technology" as our mission and by depending on a group of engineers and skilled workers with years of experience in foundation engineering and construction design, our products have reached the advanced level in INDIA in terms of the technology and quality as well.

With the latest production facilities and factory, we have completed the designs of **Cold forged parallel thread couplers/attachments** and construction methods in many large-scale and complicated foundation projects such as Metro and Monorail which has helped us to win a good reputation among our clients with excellent products and services.

Our efforts to bring forth a world class product range have been leveraged by the support from world class infrastructure. Laced with sophisticated machines and all kinds of amenities, we have been able to deliver our range in bulk well within the limitations of time. Our facility is divided into specialized units like production department, warehouse and packaging department, quality testing laboratory and other units to see through the smooth functioning of our business. Our Infrastructure provides for customization of our product range to comply with the specifications of our clientele.

KAMAR highly focuses on international cooperation and communication. Till present, our products have been exported to many different countries and regions such as Dubai, Singapore, Malaysia, Bangladesh, Iraq, Saudi Arabia, South Africa, Sri Lanka, USA, Australia, etc.



MANUFACTURING FACILITIES



Kamar uses the modern machining technology to machine parts with highest precisions various CNC turning centers. Including fully automated dual turret lathes machine parts from stock up to four inch in diameter. Larger diameter parts can easily be accommodated in our CNC & VMC Lathe. We also utilize several six and eight spindle screw machine with capacities up to 23.1/4 inches in diameter. Our vertical and horizontal CNC machine center is equipped with multiple pallets large enough to machine parts in excess of 300 Lbs. We also have various secondary lathe, Mills and drill presses.



MACHINES

REBAR CUTTING MACHINES



REBAR THREADING MACHINES



REBAR FORGING MACHINES



CONCLUSION

REASON TO PURCHASE REBAR COUPLERS FROM KAMAR

Using KAMAR Rebar Splicing offers various advantages over the method of overlapping of reinforcement bars. Some of the prime reasons are as follows.

1. Splice rebar performs like continuous reinforcement due to mechanical joint, unlike lapping which has complete dependency on concrete
2. Steel wastage is reduced significantly, save lap length steel.
3. Steel congestion is reduced due to elimination of laps. This also aids in proper flow of concrete in the critical zones and hence improves the quality of the overall structure.
4. Using couplers provides superior cyclic performance as compared to lap joint it also allows greater flexibility for the designer
5. It is possible to easily verify joint strength in case of coupler as compared to lap splice where testing is cumbersome and not regulated.
6. For the contractor usage of coupler reduces labour cost for installation and handling of steel. The construction schedule is improved and there is saving on valuable crane time on project
7. In last steel wastage and lap is reduced that is definitely save MONEY AND PRECIOUS TIME.



ANCHORAGE SYSTEMS

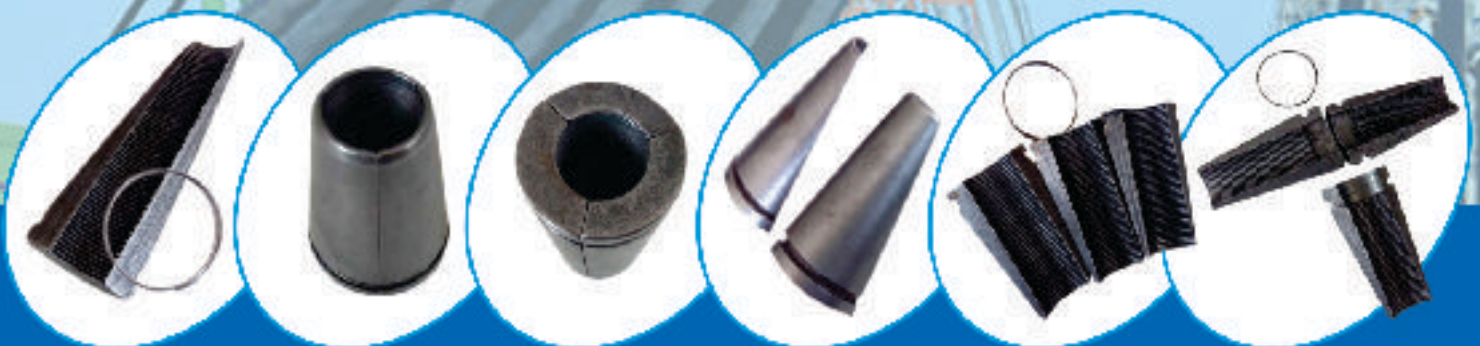
ROUND ANCHOR SYSTEM



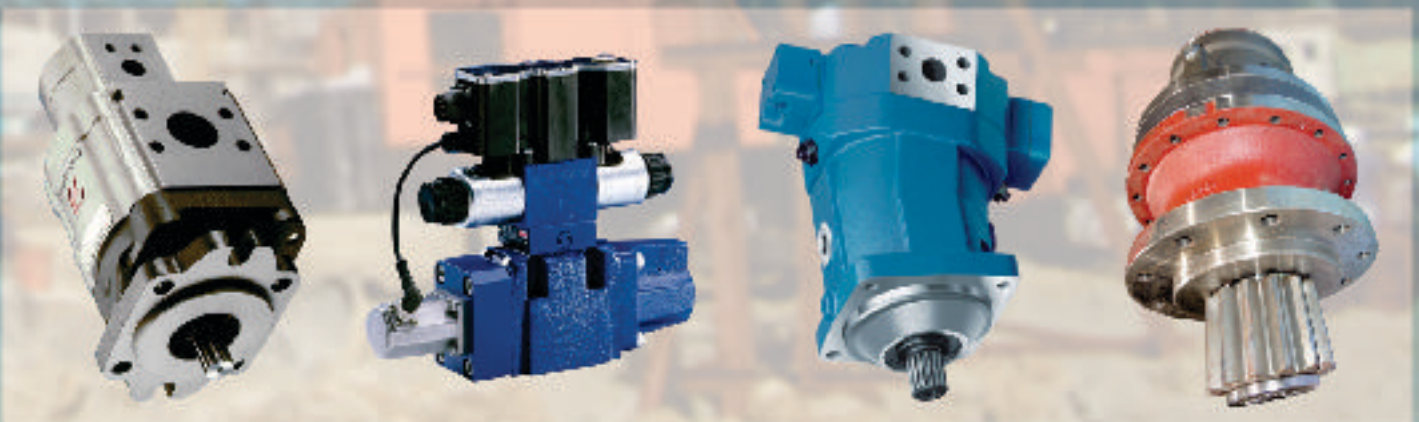
FLAT ANCHOR SYSTEM



WEDGE (GRIPS)



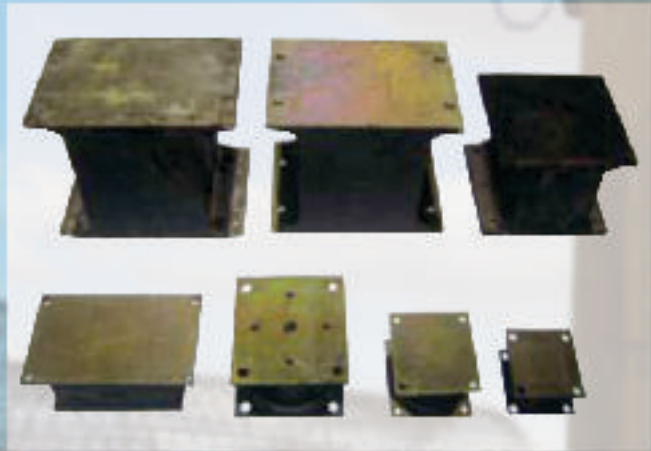
HYDRAULIC SPARES



**FOR PILING RIGS & VIBRO HAMMERS
MAIT, BAUER, SOIL MEC, IMT, CASAGRANDE, SANY, ICE, PVE & FAV**

KAMAR Hydraulics spares department Distributor of new Hydraulic Components as well as electrical components used in piling rigs & vibro hamers.
We distribute products manufactured by premier companies and leaders in their respective industries.

VIBRO SPARES



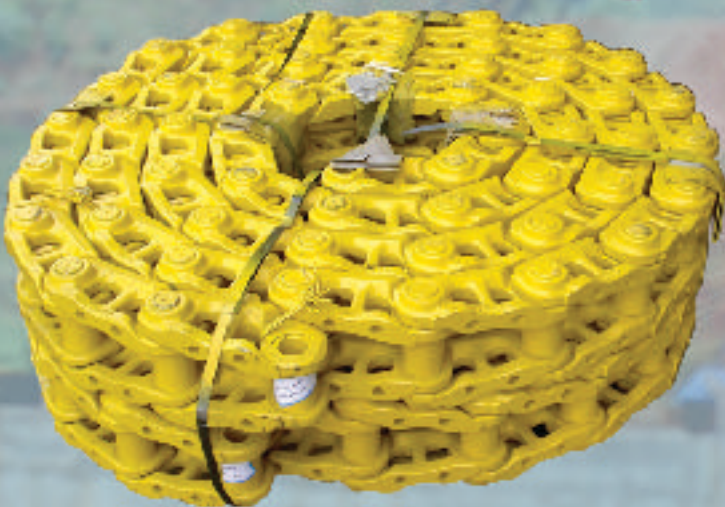
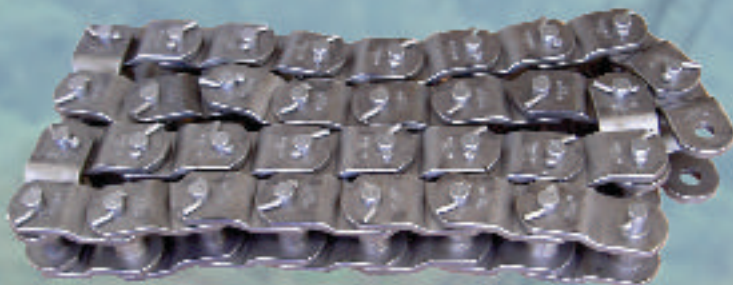
VIBRO HAMMERS SPARES FOR ICE, PTC, PVE & FAV

CRAWLER CRANE SPARES

*MANITOWOC, AMERICAN, LINK BELT,
KOBELCO, HITACHI-SUMITOMO
Crawler crane Undercarriage parts*



Sales Service and Spares of all types of Crawler Crane



**TATA P&H 320 / 325 / 330 / 335 /
440 / 550 / 655 / 955 / 1055 / TFC-280**

PARTICIPATE IN EXPO



BAUMA MUNICH 2010



CONEXPO RUSSIA 2010



EXCON BANGALORE 2010



BAUMA CONEXPO INDIA 2011



BAUMA CONEXPO INDIA 2013



BAUMA MUNICH 2013



HEAD OFFICE :

Kamar Estate, Devicha Pada,
Behind Deepak Nitrite Ltd.,
Taloja MIDC, Taluka : Panvel, Dist.: Raigad,
Maharashtra - 410 208. (INDIA)
Direct No : +91 22 - 2740 1462
Tel.: +91 22 - 2741 0766 / 2741 0768
Fax : +91 22 - 2740 1460 / 2740 1458.
E-mail : info@kamargroup.com

CORPORATE OFFICE :

20, Husain Patel Marg, Mazgaon, Mumbai - 10. (INDIA)
Tel.: +91 22 - 2377 6024 / 2371 1811
Fax : +91 22 - 2371 3708

REGIONAL OFFICES :

Delhi : +91 9990 330 130

Hyderabad : +91 8978 634 443

Kolkata : +91 9051 916 120

Chennai : +91 9629 369 128

Dealer :



www.kamartools.com