



**KAMAR**  
**INFRASTRUCTURE PVT. LTD.**  
World's One Stop Foundation Shop



Engineering at its BEST



**SHEET PILING**

*We Part of Making Beautiful World*

# Introduction

[www.kamarsheetpile.in](http://www.kamarsheetpile.in)

## **KAMAR INFRASTRUCTURE**

offer a range of sheet piling services that integrate with our bored piling solutions.



**Kamar** has worked together with the big-name construction companies aiming to provide unmatched piling knowledge for commercial, domestic and industrial building projects.

**Kamar Infrastructure Pvt. Ltd.** operates specifically within the sheet piling industry. As a leading steel piling contractor, we pride ourselves on working in partnership with our clients to provide the best service possible at any time or place.

We pride ourselves on our flexible approach, our breadth of expertise, and our strong client relationships, all of which enable us to fulfill our client requirements and often exceed their expectations.

### **Our Approach**

To take on and respond to our clients problems as our own; earn trust through service, and commercial fairness; thereby generating business in the long run.

As such, we have successfully built up long term relationships and regular business with a host of leading organizations across the commercial, industrial sectors and local authority throughout India.

We operate from a modern and well-presented head office and workshop premises in Taloja-Navi Mumbai & corporate office situated in Mazgaon, Mumbai.



**प्रारूप 1**  
**पंजीकरण प्रमाण-पत्र**

कॉर्पोरेट पहचान संख्या : U45400MH2012PTC227016      2011 - 2012

मैं एतद्वारा सत्यापित करता हूँ कि मैलर्स  
Kamar Infrastructure Private Limited

का पंजीकरण, कम्पनी अधिनियम 1956 (1956 का 1) के भाग 9 के अधीन आज किया जाता है और यह कम्पनी प्राइवेट लिमिटेड है।

यह निगमन-पत्र आज दिनांक सोलह फरवरी दो हजार बारह को मुंबई में जारी किया जाता है।

**Form 1**  
**Certificate of Incorporation**

Corporate Identity Number : U45400MH2012PTC227016      2011 - 2012  
I hereby certify that Kamar Infrastructure Private Limited is this day incorporated under Part IX of the Companies Act, 1956 (No. 1 of 1956) and that the company is private limited.

Given at Mumbai this Sixteenth day of February Two Thousand Twelve.

Registrar of Companies, Maharashtra, Mumbai  
कम्पनी रजिस्ट्रार, महाराष्ट्र, मुंबई

\*Note: The corresponding form has been approved by VIJAYA NAGORAO KHANDARE, Deputy Registrar of Companies and this certificate has been digitally signed by the Registrar through a system generated digital signature under rule 5(2) of the Companies (Electronic Filing and Authentication of Documents) Rules, 2006. The digitally signed certificate can be verified at the Ministry website (www.mca.gov.in).

कम्पनी रजिस्ट्रार के कार्यालय अभिलेख में उपलब्ध पत्राचार का पता :  
Mailing Address as per record available in Registrar of Companies office:  
Kamar Infrastructure Private Limited  
Kamar Estate, Devicha Pada, M.I.D.C., Behind Deepak Nitrite Limited, Talaja, Panvel,  
Navi Mumbai - 410208,  
Maharashtra, INDIA

**Government of India**  
**Form GST REG-06**  
[See Rule 10(1)]

**Registration Certificate**

Registration Number :27AAECK6416D1ZQ

|   |  |            |    |    |
|---|--|------------|----|----|
| 1. Legal Name                             | KAMAR INFRASTRUCTURE PRIVATE LIMITED   |            |    |    |
| 2. Trade Name, if any                     | KAMAR INFRASTRUCTURE PRIVATE LIMITED   |            |    |    |
| 3. Constitution of Business               | Private Limited Company  |            |    |    |
| 4. Address of Principal Place of Business | Kamar Estate, Devika Pada MIDC, Behind Deepak Nitrite Ltd, Panvel, Raigad, Maharashtra, 410206 |            |    |    |
| 5. Date of Liability                      | 01/07/2017   |            |    |    |
| 6. Period of Validity                     | From   | 01/07/2017 | To | NA |
| 7. Type of Registration                   | Regular  |            |    |    |
| 8. Particulars of Approving Authority     |  |            |    |    |

Signature

Name

Designation

Jurisdictional Office

9. Date of issue of Certificate      22/09/2017

Note: The registration certificate is required to be prominently displayed at all places of business in the State.

This is a system generated digitally signed Registration Certificate issued based on the deemed approval of the application for registration

# About Us

[www.kamarsheetpile.in](http://www.kamarsheetpile.in)

KAMAR INFRASTRUCTURE is one of the fast growing company in the field of Foundations Works such as : Sheet Piling, Diaphragm Wall & Piling.

## Vision & Mission

Our vision is to serve our customers better than they expect, in an ultimate safe environment, in which we become the most trusted and reliable source for site work in our region. We will accomplish this by committing to live by our mission and set of core values.

Do Excellent Work, Invest in Others.



## Strength

We are administered by a group of experienced professional's leading the team of skilled staff in foundation works. Backed by the well maintained fleet of equipment required for the execution of the projects within budget and on time.

## TECHNICAL BACKGROUND

- KAMAR is the outcome of the extensive experience of its Managing Director, Directors, Engineering staff and its vast equipment resources as can be seen from our equipment list.
- KAMAR INFRASTRUCTURE is an ISO 9001:2015 certified company committed in delivering quality services without compromising the safety and well-being of its employee.
- Our teams use the most advance piling techniques and equipment's available. Piling Technology is our specialty and our forward-thinking approach has put us at the cutting edge of the construction industry. We also offer a range of services from **KAMAR INFRASTRUCTURE** to **Bored Piling**.

## DESIGN / BUILD

- Our team of construction professionals can help achieve the most economical and practical project design.
- The professionals at KAMAR have the construction experience and the technical ability to help customers find reasonable solutions to challenging projects.

## ESTIMATING PLANNING

- Skilled Estimators with years of experience in the piling industry can accurately estimate any project, no matter what the size is.
- We use value engineering from start to finish to give you the most economical solutions.
- From design through project completion, our skilled team is ready to assist you every step of the way.

## MANAGEMENT

- Each member of our management team graduated from known universities.
- Skilled Project Management means projects are completed smoothly and on schedule.
- Excellent communication, both with customers and within our organization, is what makes our company so easy to work with.

## FIELD WORKS

- Our Site Supervisors and staff have many years of experience in the field, ensuring success on even the most challenging projects.
- Our qualified workforce includes certified welders and Certified Rig, Vibro Crane Operators.
- Every member of our workforce is required to remain up-to-date in completing MUST safety modules.

# Sheet Piling

[www.kamarsheetpile.in](http://www.kamarsheetpile.in)

Sheet Piling contractor KAMAR INFRASTRUCTURE offers a range of Sheet Piling solutions to its clients in the INDIA.

Permanent retaining walls utilising sheet piles are used on schemes large and small, from simple projects to complex slope stabilisation solutions.

They offer cost - effective alternatives to contiguous and secant concrete walls. They may be designed to both retain temporary excavations and to act as the permanent retaining structure, often in conjunction with the base slab which offers propping to the wall.

Sheet pile walls are commonly used in service yards of commercial and retail sector developments, flood defence schemes, bridge abutments and boundary walls. Sheet pile retaining walls have distinct advantages over concrete contiguous and secant walls. Besides being more cost-effective, they require no curing time before excavations can commence, thus allowing shorter programmes.



As a contractor who specialises in Sheet Piling, Kamar Infrastructure work revolves around certain key construction features: sheet pile basements; permanent retaining walls; temporary sheet piling;

conventional and marine sheet piling; steel bearing pile foundations; and temporary and permanent anchors.

They offer cost - effective alternatives to contiguous and secant concrete walls. They may be designed to both retain temporary excavations and to act as the permanent retaining structure, often in conjunction with the base slab which offers propping to the wall.

We pride ourselves on our flexible approach, our breadth of expertise, and our strong client relationships, all of which enable us to fulfill our client requirements and often exceed their expectations. As a unique sheet piling contractor, we are experienced in all aspects of sheet piling including cofferdams, retaining walls, motorway piling, temporary and permanent works, and many other specialist sheet piling construction methods.

# Our Features

[www.kamarsheetpile.in](http://www.kamarsheetpile.in)

Sheet Piling Contractor KAMAR INFRASTRUCTURE, offer the following specialist retaining wall solutions :

- ◆ Propped Walls
- ◆ Cantilever
- ◆ Anchored Walls
- ◆ Conventional and Marine Sheet Piling
- ◆ Permanent Retaining Walls
- ◆ Temporary Sheet Piling
- ◆ Sheet Pile Basements
- ◆ Cofferdam



## APPLICATIONS CONSTRUCTIONS

### HYDRAULIC ENGINEERING PORTS

- ◆ Quay Walls
- ◆ Dock Structures
- ◆ Dolphins
- ◆ Ro-Ro Facilities

### WATER PROTECTIONS

- ◆ Pumping Stations
- ◆ Sewage Works
- ◆ Stormwater Overflow Basins
- ◆ Stormwater Retention Basins

### ENVIRONMENTAL PROTECTION LANDFILL, POLLUTION

- ◆ Vertical Diaphragm / Slurry Walls
- ◆ Excavations for Soil Replacement
- ◆ Tank Farm Bund Walls
- ◆ Waste Tipping Ramps

### CIVIL ENGINEERING

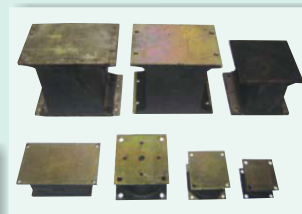
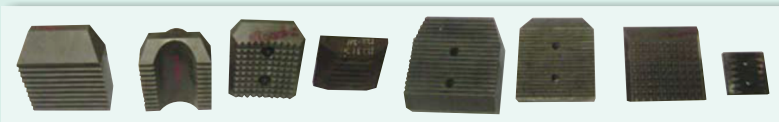
- ◆ Foundations
- ◆ Footings
- ◆ Trench Shoring
- ◆ Underground Car Parks
- ◆ Excavations

**SALES  
RENTAL  
PARTS  
SERVICE**



*for*

**Vibratory Hammers**

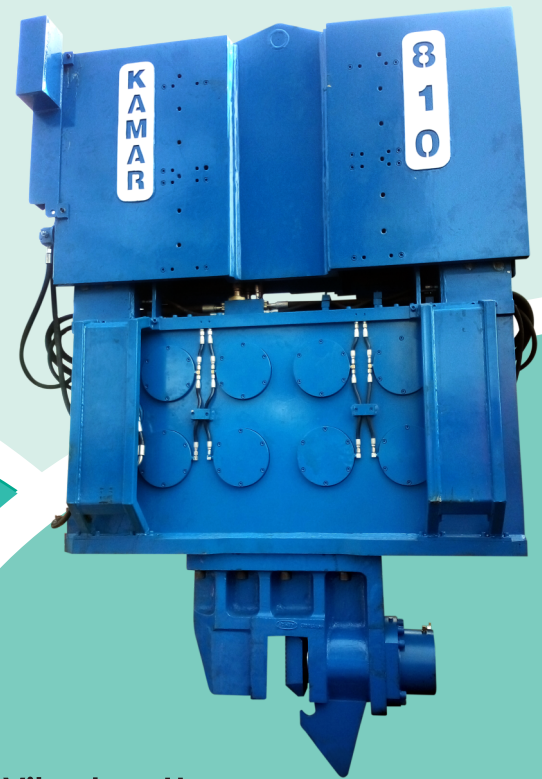


VIBRO HAMMERS SPARES FOR ICE, PTC, PVE & FAV



# Our Equipments

[www.kamarsheetpile.in](http://www.kamarsheetpile.in)



Continuing the ongoing investment plan established at the outset, Kamar Infrastructure has a modern range of specialist piling equipment including:

- **Vibratory Hammers**
- **Hydraulic Impact Drop Hammers**

## **KAMAR INFRASTRUCTURE**

continuing a tradition of innovation.

Today, we continue to dominate the Asian market for vibratory driver/extractors with its line of powerful and more reliable hydraulic power packs. Our in-house brand KAMAR and its logo is a trademark of assurance and confidence that is very well recognized in the local construction industry. Each KAMAR vibratory driver/extractors and power packs provides impressive driving and pulling capabilities.

Our hydraulic power packs to meet the harsh and humid conditions of construction sites of this generation. The combined configuration offers contractors significant economies with the ability to meet a diversity of requirement with one hammer with multiple energy ratings. Our principles of simplicity of design, reliability of performance and durability for exceptionally long service life continue to be central to our business. These values resonate with contractors and engineering firms worldwide.

Every KAMAR equipment has been the result of listening to and working in partnership with customers. For decades, KAMAR has responded time after time inventing and perfecting tools and equipment to meet customers' requirements for advanced solutions to seemingly impossible technical challenges. KAMAR, attention to customer service continues to perfect its fines of equipment and interchangeable components. The goal, to enable customers to accomplish more at lower cost with their investment in KAMAR equipment.

# Our Services

[www.kamarsheetpile.in](http://www.kamarsheetpile.in)



**KAMAR is committed to continuing this tradition of responsive technology development. To achieve our goals we aim constantly :**

- To deliver value by listening and responding to our customers and partners : Providing high- performance, reliable equipment at a fair price, backed up by relentless attention to product and service support.
- To foster the creativity and practical innovation of our team of highly trained and highly motivated people.
- To promote the success and profitability of our customers and partners to expand and continue our tradition of creating satisfied customers.
- Responsive, creative customer support and service.
- Absolute honesty in our relationships with customers and suppliers 'Restless pursuit of reliable technology.

**We offer a variety of packages to suit our client's specific needs and requirements.**

- Structural Design - Preliminary and for construction, supply and installation of sheet piles to form temporary or permanent structures.
- Permanent water-sealed cofferdams for basement construction.
- Land and water-based sheet piled structures.
- Supply and installations of sheet pile clutch sealants.
- Supply and installations of hydraulic and fabricated cofferdam/trench support frames.
- Civil and construction portal framed building, roadways and drainage.

# Our Successfully Completed Projects

[www.kamarsheetpile.in](http://www.kamarsheetpile.in)



**LARSEN & TOUBRO LTD.**  
**COASTAL ROAD PROJECT, MUMBAI**



**AFCONS INFRASTRUCTURE LTD.**  
**ANNARAM, TELANGANA**



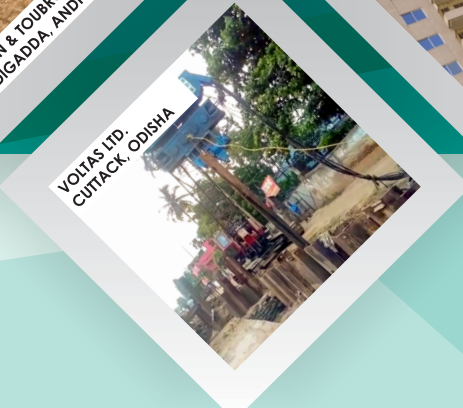
**TATA PROJECTS**  
**BELAPUR, NEW MUMBAI**



**LARSEN & TOUBRO LTD.**  
**MEDIGADDA, ANDHRA PRADESH**



**SHAPOORJI PALLONJI CO. LTD.**  
**KOLKATA**



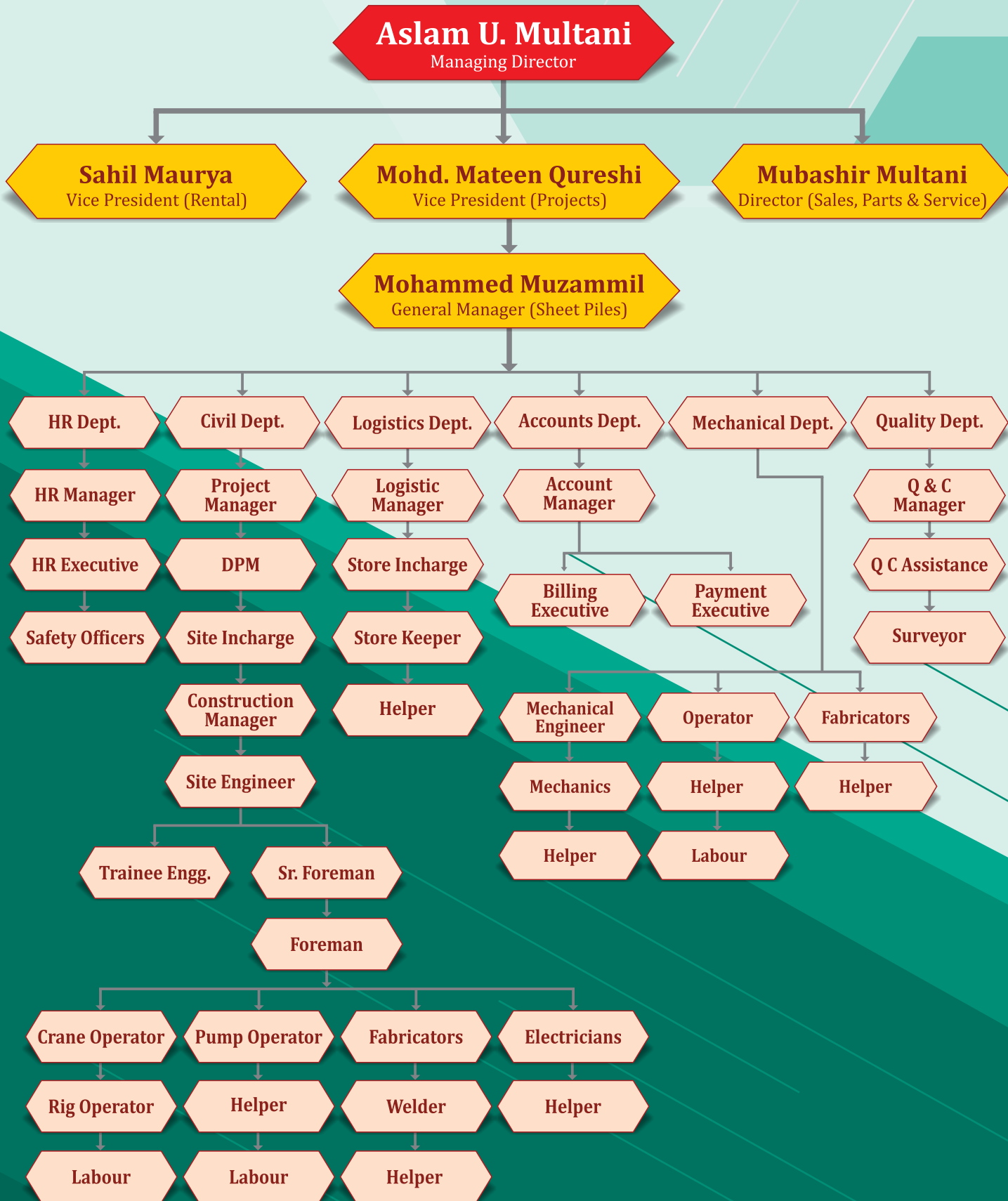
**VOLIAS LTD.**  
**CUTTACK, ODISHA**



**GAMMON INDIA PVT. LTD.**  
**GOMTI RIVER, LUCKNOW**

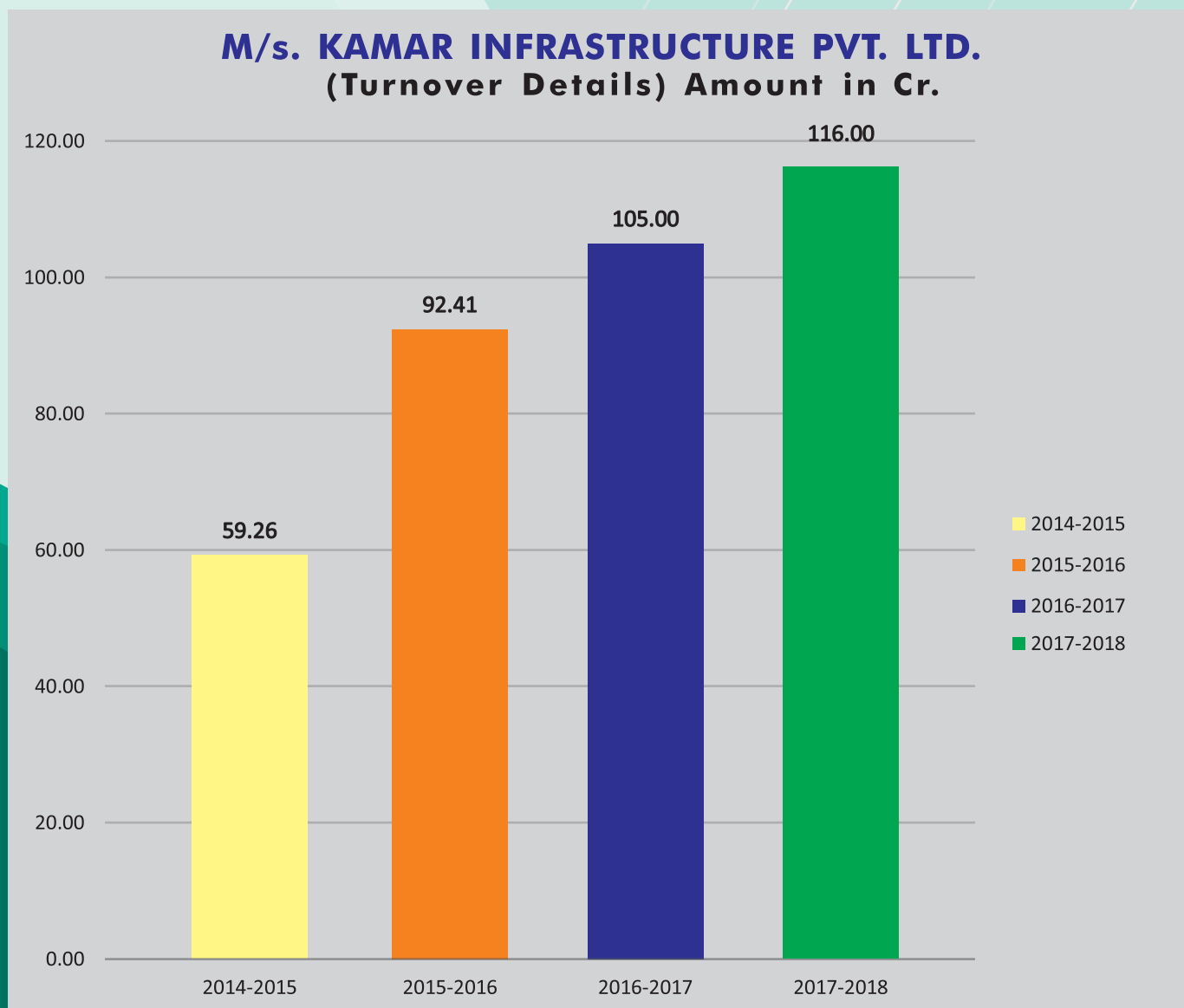
**" It is our ambition not only to perform but to deliver desired results in due course."**

# Organisation Chart



# Annual Turn Over Chart

www.kamarsheetpile.in



## Our Equipment List

| VIBRO HAMMERS | CAPACITY | Qty. |
|---------------|----------|------|
| 225           | 2.5 TON  | 5    |
| KVH 405       | 5 TON    | 10   |
| KVH 810       | 8 TON    | 15   |
| 44 - 50       | 7 TON    | 2    |

| CRAWLER CRANES | CAPACITY | Qty. |
|----------------|----------|------|
| P&H 320 H      | 20 TON   | 10   |
| P&H 325        | 25 TON   | 10   |
| P&H 335        | 35 TON   | 15   |
| P&H 440        | 40 TON   | 5    |
| P&H 955 ALC    | 75 TON   | 12   |

| IMPACT HAMMERS                   | CAPACITY | Qty. |
|----------------------------------|----------|------|
| HHK 7 HYDRAULIC HAMMER JUNTAN    | 7 TON    | 1    |
| HH579 HYDRAULIC IMPACT HAMMER    | 9 TON    | 5    |
| HH579-11 HYDRAULIC IMPACT HAMMER | 11 TON   | 1    |

# Works Carried Out

[www.kamarsheetpile.in](http://www.kamarsheetpile.in)

| Sr. No. | NAME OF CLIENT                                 | LOCATION                                | YEAR (COMPLETION) |
|---------|--|---|-------------------|
| 1       | LARSEN & TOUBRO LTD.                           | HAZIRA SURAT GUJARAT                    | 2006              |
| 2       | SHAPOORJI PALLONJI CO. LTD.                    | TORRENT POWER PLANT,<br>KAMREJ, GUJARAT | 2006              |
| 3       | JMC PROJECTS (INDIA) LTD.                      | TORRENT POWER PLANT,<br>SURAT, GUJARAT  | 2007              |
| 4       | AMMA LINES LTD.                                | HAZIRA SURAT GUJARAT                    | 2008              |
| 5       | LARSEN & TOUBRO LTD.                           | KATIPALLI,<br>SHIPYARD, TAMIL NADU      | 2009              |
| 6       | SIMPLEX PROJECT LTD.                           | PARADEEP ODISHA                         | 2010              |
| 7       | LARSEN & TOUBRO LTD.                           | PARADEEP ODISHA                         | 2011              |
| 8       | VALECHA ENGINEERING LTD.                       | PARADEEP ODISHA                         | 2011              |
| 9       | S. P. SINGLA CONSTRUCTION PVT. LTD.            | PATNA BIHAR                             | 2012              |
| 10      | SIMPLEX PROJECT LTD.                           | VARANASI, UTTAR PRADESH                 | 2013              |
| 11      | COASTAL MARINE CONSTRUCTION & ENGINEERING LTD. | VAIZAG, ANDHRA PRADESH                  | 2014              |
| 12      | AFCONS INFRASTRUCTURE LTD.                     | COCHIN, KERALA                          | 2015              |
| 13      | SUPREME INFRASTRUCTURE PVT. LTD.               | BELAPUR, MUMBAI                         | 2016              |
| 14      | AFCONS INFRASTRUCTURE LTD.                     | ANNARAM, TELENGANA                      | 2016              |
| 15      | ITD CEMENTATION INDIA LTD.                     | VAIZAG, ANDHRA PRADESH                  | 2017              |
| 16      | GAMMON INDIA PVT. LTD.                         | GOMTI RIVER, LUCKNOW                    | 2017              |
| 17      | LARSEN & TOUBRO LTD.                           | MEDIGADDA,<br>ANDHRA PRADESH            | 2018              |
| 18      | ITD CEMENTATION INDIA LTD.                     | HALDIA, WEST BENGAL                     | 2018              |
| 19      | VOLTAS LTD.                                    | CUTTACK, ODISHA                         | 2018              |
| 20      | LARSEN & TOUBRO LTD.                           | MTHL, MUMBAI                            | 2019              |
| 21      | AFCONS INFRASTRUCTURE LTD.                     | JAFARABAD, GUJARAT                      | 2019              |
| 22      | ITD CEMENTATION INDIA LTD.                     | DHAMARA, ODISHA                         | 2019              |
| 23      | SHAPOORJI PALLONJI CO. LTD.                    | KOLKATTA                                | 2019              |
| 24      | TATA PROJECTS                                  | BELAPUR, NEW MUMBAI                     | 2019              |

# Our Prestigious Clients

[www.kamarsheetpile.in](http://www.kamarsheetpile.in)



We firmly believe that Customer is our Asset.

|   |   |  |
|---|---|--|
|  <p><b>GAMMON</b><br/>INDIA LIMITED</p>   |  <p><i>Larsen &amp; Toubro Ltd.</i></p>                                       |  <p>Afcons Infrastructure Ltd.</p>   |
|  <p><b>TATA</b><br/>TATA PROJECTS LIMITED</p>                                    |  <p><b>Shapoorji Pallonji</b></p>  |  <p><b>HCC</b><br/>HINDUSTAN CONSTRUCTION CO.</p>                                     |
|  <p>Chennai Metro Rail</p>   |  <p><b>LODHA</b><br/>BUILDING A BETTER LIFE<br/><b>Lodha Group Ltd.</b></p> |  <p>NEW MANGALORE PORT TRUST</p>  |
|  <p><b>Sabarmati Riverfront</b><br/>Development Corporation Limited</p>          |  <p><b>advant</b></p>  |  <p>दिल्ली मेट्रो रेल कॉर्पोरेशन लिमिटेड<br/>Delhi Metro Rail Corporation Limited</p> |
|  <p><b>ITD Cem</b><br/>ITD CEMENTATION INDIA LIMITED</p>                         |  <p><b>MEGA</b><br/>AHMEDABAD MEGA METRO</p>                                |  <p><b>SEW</b><br/>S E W Infrastructure Ltd.</p>                                      |
|  <p><b>SIMPLEX</b><br/>INFRASTRUCTURES LTD.<br/>Simplex Infrastructures Ltd.</p> |  <p><b>ESSAR</b><br/>Essar Construction Ltd.</p>                            |  <p><b>Pratibha Industries</b></p>  |

"Our experienced project delivery teams work closely with our clients throughout the project life cycle ensuring the development runs to time and budget"



**HEAD OFFICE :**

Kamar Estate, Devicha Pada,  
Behind Deepak Nitrite Ltd.,  
Taloja MIDC, Taluka : Panvel, Dist.: Raigad,  
Maharashtra - 410 208. ( INDIA )  
Direct No : +91 22 - 2740 1462  
Tel.: +91 22 - 2741 0766 / 2741 0768  
Fax : +91 22 - 2740 1460 / 2740 1458.  
E-mail : sheetpile@kamargroup.com

Sahil Maurya (Rental)  
+91 9870555744  
sahil@kamargroup.com

Mubashir Multani (Sales, Parts & Service)  
+91 98704 00112  
mam@kamargroup.com

Mohammed Muzammil (Projects)  
+91 84392 42923  
muzammil@kamargroup.com

**CORPORATE OFFICE :**

20, Husain Patel Marg, Mazgaon,  
Mumbai - 10. ( INDIA )  
Tel.: +91 22 - 2377 6024 / 2371 1811  
Fax : +91 22 - 2371 3708

[www.kamarsheetpile.in](http://www.kamarsheetpile.in)  
[www.vibrohammer.in](http://www.vibrohammer.in)

**REGIONAL OFFICES :**

DELHI , CHENNAI , KOLKATA , HYDERABAD , AHMEDABAD